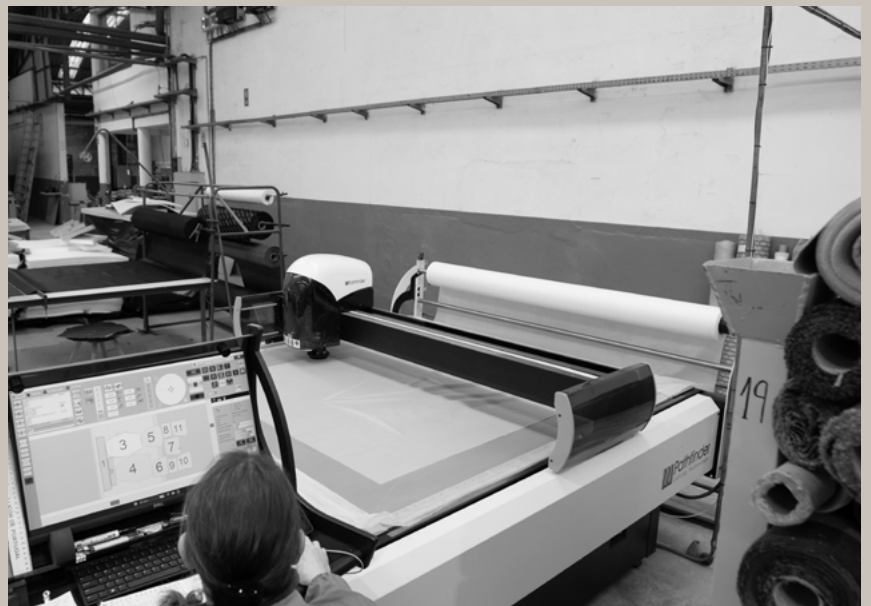


# SWATCH BOOK 2026



# METAL FINISHES

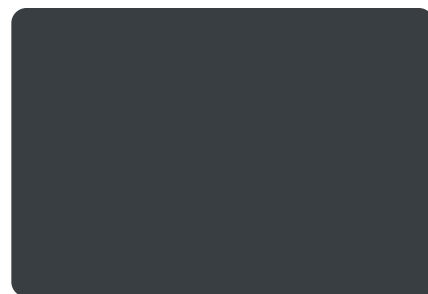
**\_FT** - sandy texture polyester | poliéster de textura fina



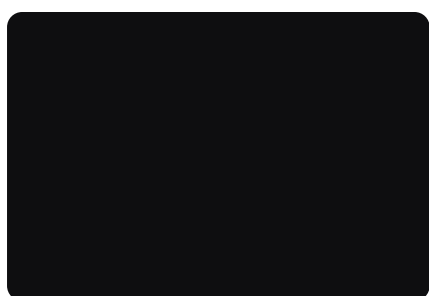
PO22 - RAL 9010



EP80 - RAL 7042



PO59 - RAL 7016



EP55 - RAL 9005



PO68 - RAL 5003



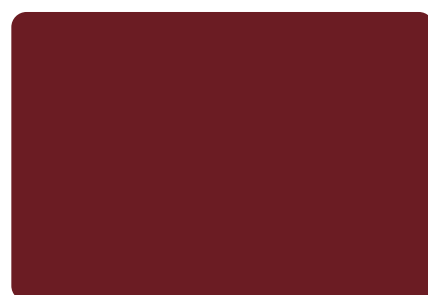
PO86 - RAL 6011



PO76 - RAL 7044



EP0103 - RAL 3012



PO64 - RAL 3004



EP0107 - RAL 1036



EP0110 - Granite Rust



EP0109 - Bond Golf Marrone

**\_PA** polished aluminium finish | alumínio polido



PA001

2

# WOOD FINISHES

**\_FX** - ash wood | madeira de freixo



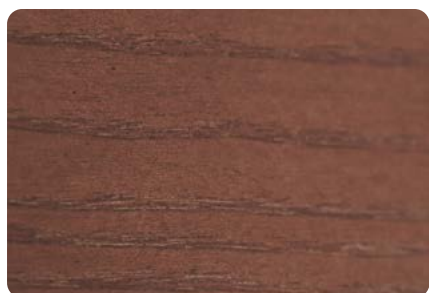
**FX0149** - Pine



**FX0151** - Cherry



**FX0152** - Walnut



**FX0153** - Medium Brown



**FX0154** - Dark Brown



**FX0155** - Grey



**FX0156** - Blacktree



**FX0157** - Black



**FX0158** - Eucalyptus



**FX0159** - Ebony



**FX0160** - Earth Brown



**FX0161** - Cool Brown

3

# GR01

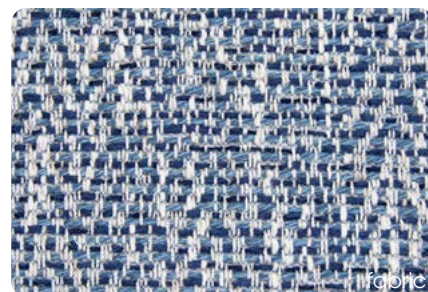
fabrics and vinyls by elastrongroup.com



Paris - Ocean



Babel - Blue



Nobel - Ocean



Tribu - Ocean



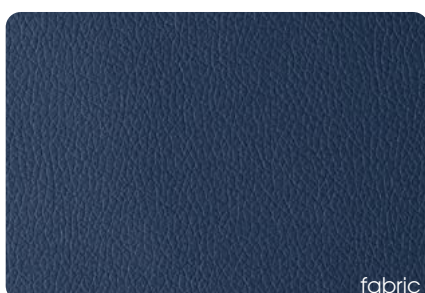
Munich Suede - Blue



Bristol - Ocean



Bronx - Ocean



Omega - Blue



Dublin - Ocean



Vienna - Safira



Munich Suede - Sky



Swing - Sky



Boston - Sky



Roma - Aquamarine



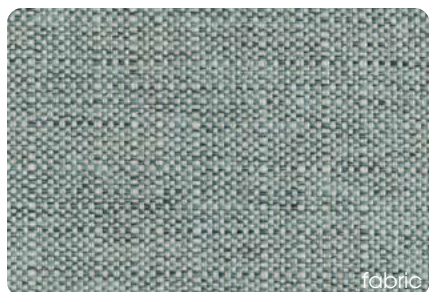
Seattle - Sky

material specifications

www.msilva.com.pt

# GR01

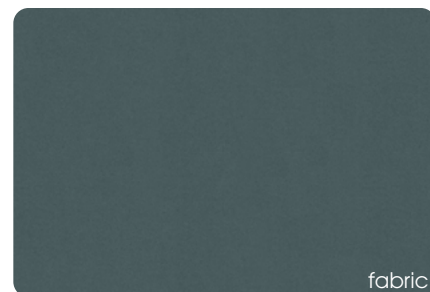
fabrics and vinyls by elastrongroup.com



**Babel** - Safira



**Munich Suede** - Safira



**Casino** - Safira



**Macau** - Petrol



**Royal Suede** - Camel



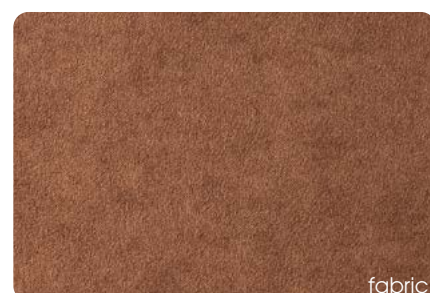
**Madeira** - Terra



**Dallas** - Cuoio



**Nappatech** - Cappucino



**Royal Suede** - Cuoio



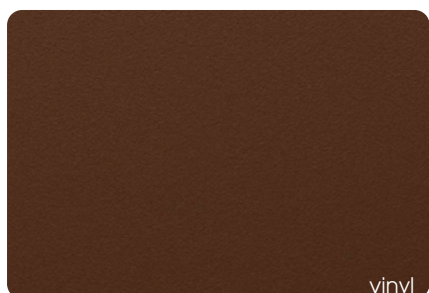
**Macau** - Terra



**Casino** - Cuoio



**Vienna** - Sienna



**Falcon** - Cuoio



**Dallas** - Cognac



**Nobel** - Truffle

5

# GRO1

fabrics and vinyls by elastrongroup.com



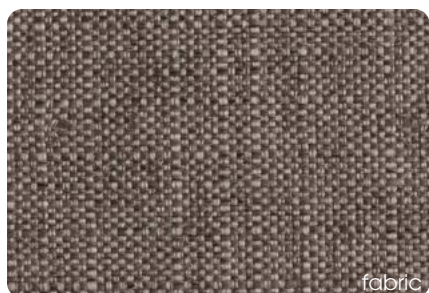
Picasso - Sand



Danubio - Trufa



Pacifico - Taupe



Babel - Taupe



Bristol - Mouse



Royal Suede - Caribou



Dublin - Mouse



Casino - Ebony



Ascot - Mouse



Seattle - Lima



Tribu - Green



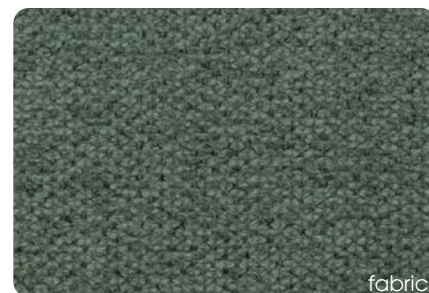
Boston - Green



Boston Water - Green



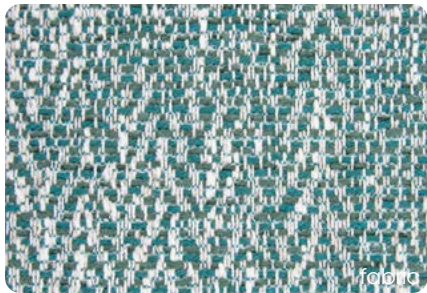
Madeira Water - Green



Brooklyn - Bottle

# GRO1

fabrics and vinyls by elastrongroup.com



**Nobel** - Emerald



**Paris** - Green



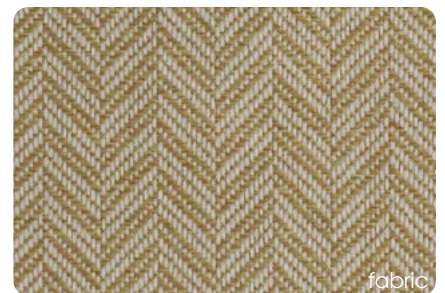
**Vienna** - Emerald



**Dubai Deep** - Green



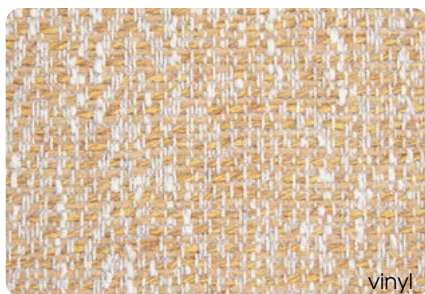
**Bronx** - Yellow



**Glasgow** - Mustard



**Tribu** - Mostaza



**Nobel** - Mostaza



**Apollo** - Yellow



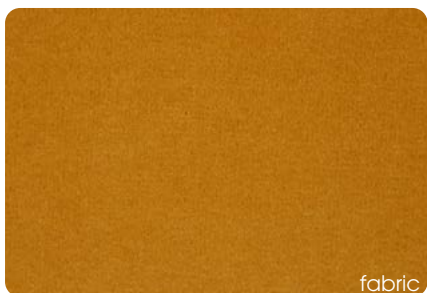
**Babel** - Yellow



**Omega** - Mostaza



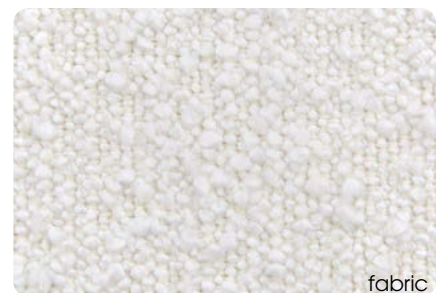
**Ascot** - Mostaza



**Casino** - Mostaza



**Macau** - Gold



**Ascot** - Nata

material specifications

www.msilva.com.pt

# GRO1

fabrics and vinyls by elastrongroup.com



**Munich Suede** - Nata

fabric



**Seattle** - Cream

fabric



**Apollo** - Cream

fabric



**Nobel** - Beige

fabric



**Omega** - Beige

vinyl



**Dublin** - Beige

fabric



**Ascot** - Champagne

fabric



**Oxford** - Beige

fabric



**Bristol** - Beige

fabric



**Vienna** - Lavanda

fabric



**Bristol** - Purple

fabric



**Swing Old** - Purple

fabric



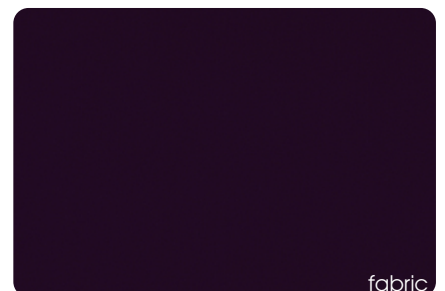
**Paris** - Lavanda

fabric



**Baltic Deep** - Purple

fabric



**Paris** - Purple

fabric

material specifications

# GRO1

fabrics and vinyls by elastrongroup.com



**Queens** - Purple



**Scotland** - Purple



**Danubio** - Purple



**Arizona** - Purple



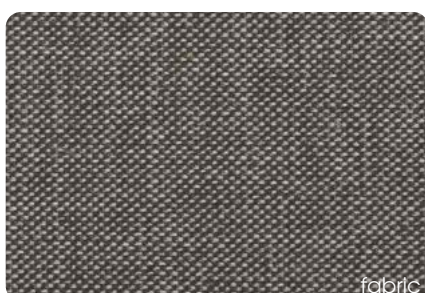
**Oxford** - Ash



**Royal Suede** - Medium Grey



**Bristol** - Anthracite



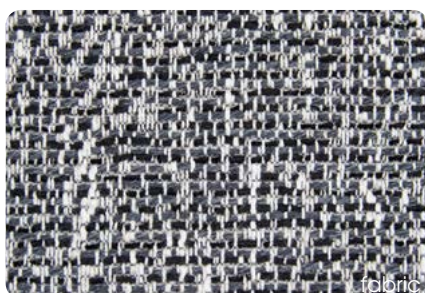
**Roma** - Graphite



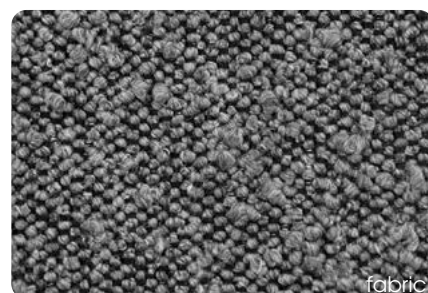
**Omega** - Ash



**Seattle** - Anthracite



**Nobel** - Carbon



**Ascot** - Graphite



**Bronx** - Black

material specifications

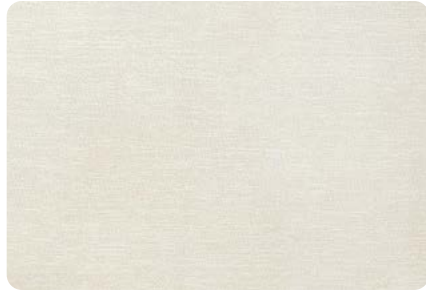
www.msilva.com.pt

# GR02

\_Fabrics by panaz.com



Alba - 829 Parchment



Eve - 837 Stone



Alba - 841 Biscotti



Luxe - 805 Cream



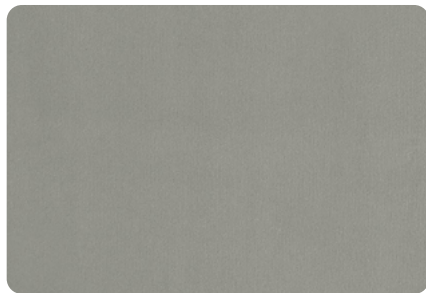
Alba - 321 Wheat



Riva - 919 Zinc



Mama - 901 Silver



Luxe - 919 Zinc



Alba - 911 Steel



Mama - 919 Zinc



Alba - 902 Slate



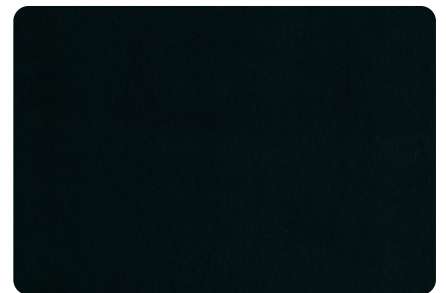
Mama - 903 Charcoal



Alba - 949 Noir



Highland - 903 Charcoal



Luxe - 900 Black

10

# GR02

\_Fabrics by panaz.com



Alba - 826 Taupe



Alba - 925 Putty



Eve 835 - Hessian



Alba - 971 Nickel



Highland - 858 Cobble



Highland - 877 Oyster



Riva - 823 Chablis



Luxe - 823 Chablis



Riva - 905 Dove



Highland - 823 Chablis



Luxe - 703 Mink



Riva - 703 Mink



Highland - 703 Mink



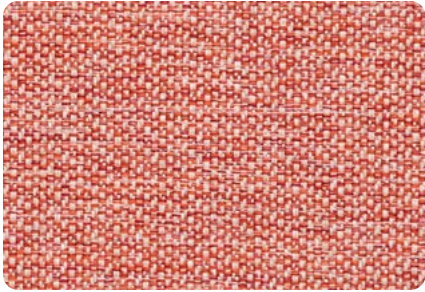
Alba - 702 Chocolate



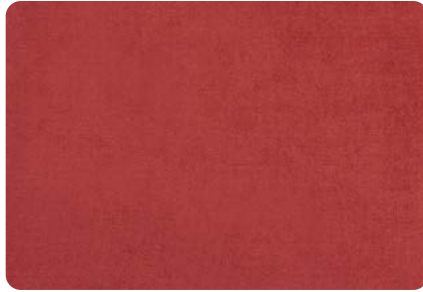
Marna - 814 Espresso

# GR02

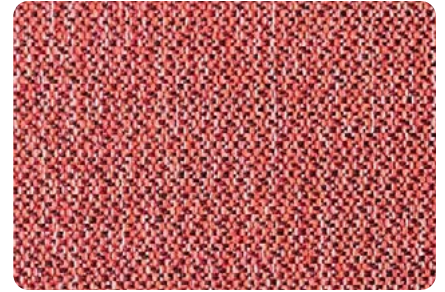
\_Fabrics by panaz.com



Riva - 637 Soft Peach



Luxe - 574 Dark Coral



Riva - 574 Dark Coral



Luxe - 408 Terracotta



Kilda - 439 Raspberry



Marna - 300 Gold



Kilda - 238 Citrus



Luxe - 238 Citrus



Riva - 238 Citrus



Eve - 300 Gold



Kilda - 618 Blush



Highland - 692 Heather



Alba - 642 Thistle



Eve - 156 Grape



Marna - 202 Amethyst

12

# GR02

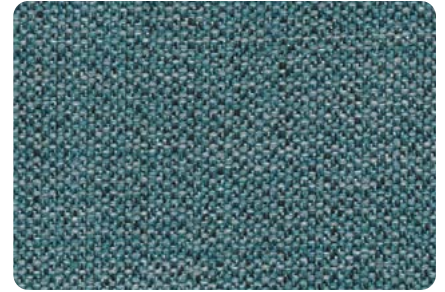
\_Fabrics by panaz.com



**Kilda** - 134 Sky



**Luxe** - 134 Sky



**Riva** - 134 Sky



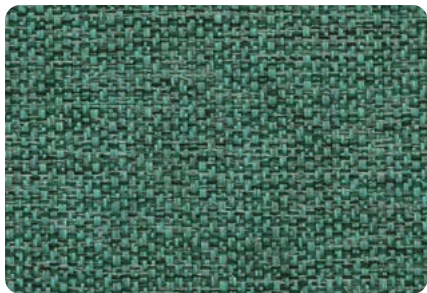
**Highland** - 110 Pacific



**Alba** - 111 Peacock



**Luxe** - 129 Ocean



**Riva** - 129 Ocean



**Eve** - 151 Teal



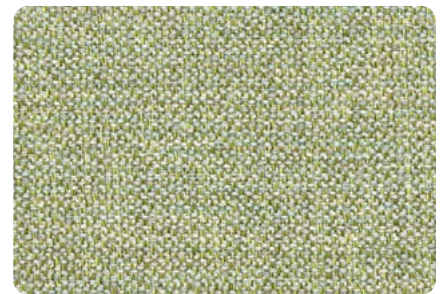
**Alba** - 151 Teal



**Luxe** - 151 Teal



**Alba** - 952 Platinum



**Riva** - 271 Celadon



**Luxe** - 271 Celadon



**Highland** - 271 Celadon

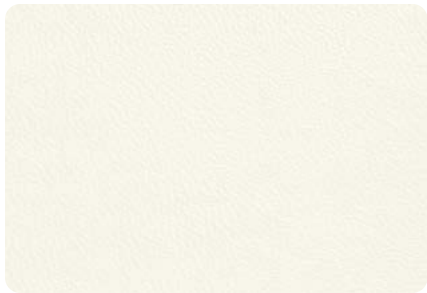


**Alba** - 251 Eau De Nil

13

# GR02

\_Vinyls by panaz.com



**Zest** - 005 Chalk



**Aston** - 813 Chalk



**Vintage** - 805 Cream



**Aston** - 837 Stone



**Zest** - 805 Cream



**Soft Touch Pro** - 905 Dove



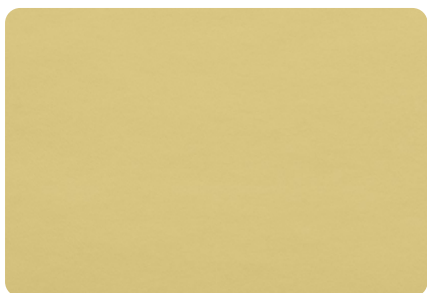
**Aston** - 805 Cream



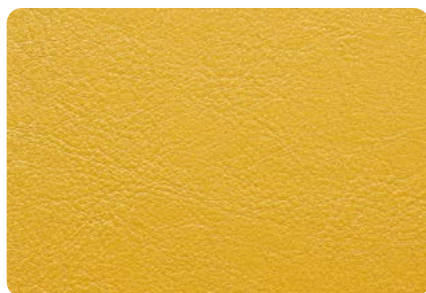
**Brookland** - 805 Cream



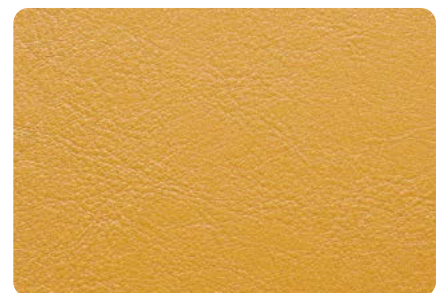
**Aston** - 507 Rich Ivory



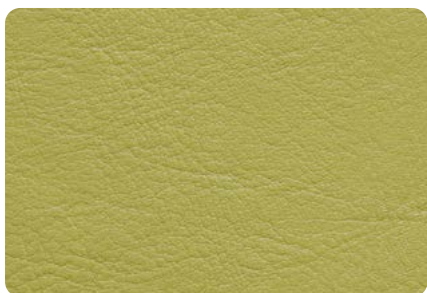
**Zest** - 326 Hay



**Aston** - 238 Citrus



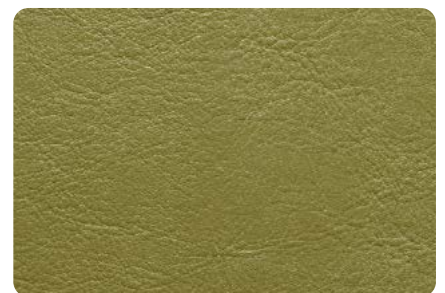
**Aston** - 314 Mustard



**Aston** - 233 Pistachio



**Aston** - 220 Light Green



**Aston** - 226 Lime

14

# GRO2

\_Vinyls by panaz.com



Zest - 209 Wasabi



Zest - 229 Forest



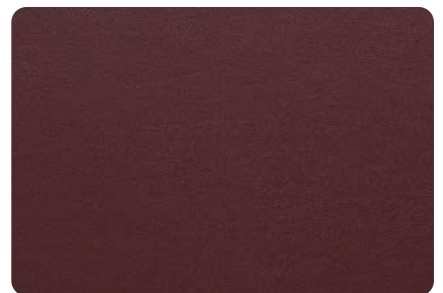
Brookland - 229 Forest



Aston - 444 Cherry



Soft Touch Pro - 437 Tuscan Red



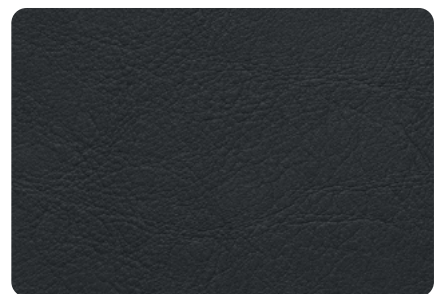
Zest - 414 Wine



Brookland - 407 Burgundy



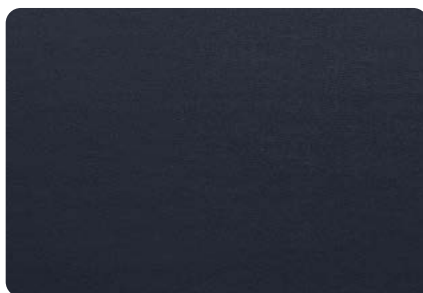
Aston - 407 Burgundy



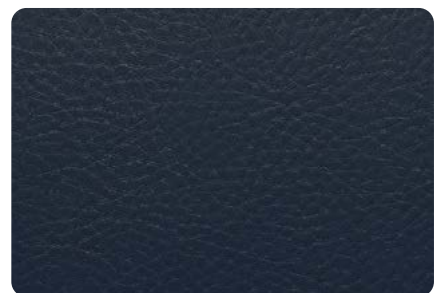
Aston - 116 Navy



Aston - 105 Indigo



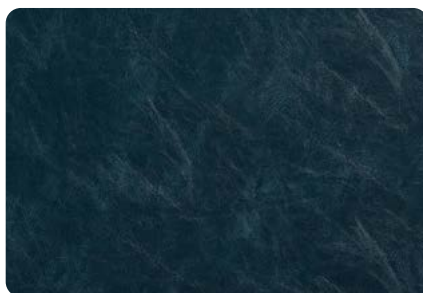
Zest - 105 Indigo



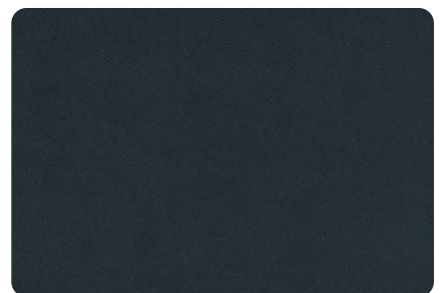
Brookland - 116 Navy



Soft Touch Pro - 192 Ink



Antique - 105 Indigo



Vintage - 105 Indigo

15

# GR02

\_Vinyls by panaz.com



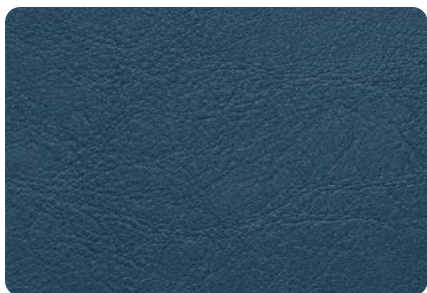
**Aston** - 108 Delph



**Aston** - 134 Sky



**Brookland** - 108 Delph



**Aston** - 100 Blue



**Vintage** - 505 Pearl



**Aston** - 952 Platinum



**Antique** - 835 Hessian



**Brookland** - 925 Putty



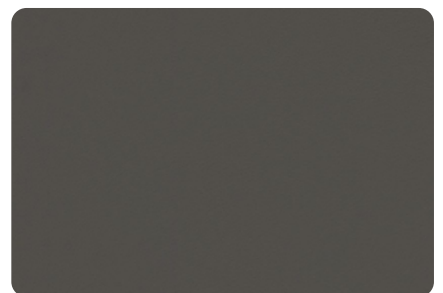
**Vintage** - 836 Sand



**Soft Touch Pro** - 837 Stone



**Brookland** - 911 Steel



**Zest** - 906 Ash



**Aston** - 906 Ash



**Soft Touch Pro** - 503 Astral Grey



**Brookland** - 904 Pewter

16

# GR02

\_Vinyls by panaz.com



**Aston** - 954 Graphite



**Zest** - 823 Chablis



**Aston** - 823 Chablis



**Vintage** - 823 Chablis



**Zest** - 843 Chai



**Vintage** - 815 Buff



**Aston** - 815 Buff



**Aston** - 877 Oyster



**Brookland** - 744 Saddle



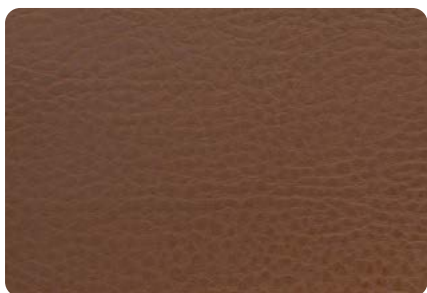
**Vintage** - 801 Tan



**Aston** - 801 Tan



**Antique** - 817 Chestnut



**Brookland** - 801 Tan



**Soft Touch Pro** - 826 Taupe



**Aston 807** - Mushroom

17

# GR02

\_Vinyls by panaz.com



**Aston** - 703 Mink



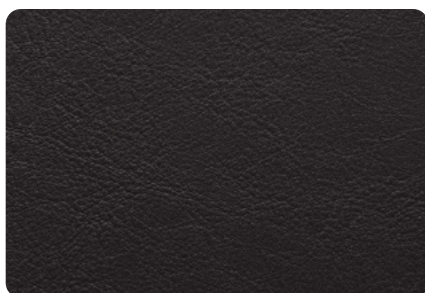
**Zest** - 807 Mushroom



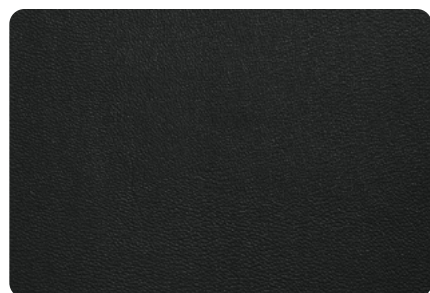
**Aston** - 953 Gunmetal



**Soft Touch Pro** - 900 Black



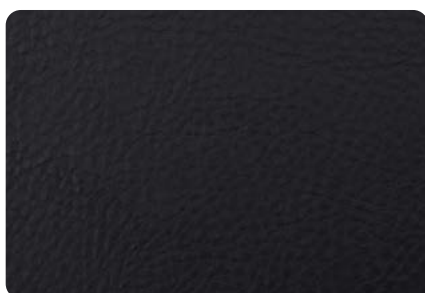
**Aston** - 900 Black



**Zest** - 900 Black



**Vintage** - 900 Black



**Brookland** - 900 Black

# GRO1 MATERIAL SPECIFICATIONS

by elastrongroup.com

## APOLLO specifications:



**Composition | Composição**  
100% Polyester



**Flammability | Classe ignífuga**  
BS 5852 Part I - Cigarette / EN 1021-1 Cigarette  
CA TB 117:2013 / NFPA 260 Cigarette  
Optional Treatments (back coating)  
BS 5852 Source 0&1 / Crib5 / 1.IM / M1 / B1 / IMO PART 8



**Stain resistant | Anti-nódoa**  
Anti-microbial



**Hydrocare**



**Pet Friendly | Resistente a animais de estimação**  
Scratch Resistance



**Waterproof | Impermeável**



**Abrasion resistance | Resistência à abrasão**  
300.000+ Martindale

## ARIZONA specifications:



**Composition | Composição**  
Surface: 91% PVC + 9% PU  
Backing: 95% Polyester +5% Cotton



**Flammability | Classe ignífuga**  
FLAMMABILITY NORMS  
BS 5852 Part I - Cigarette & Match / EN 1021-1 / 2 Cigarette & Match  
CA TB 117:2013 / NFPA 260 Cigarette  
Optional Treatments (back coating)  
BS 5852 Source 0&1 / Crib5 / 1.IM / M1 / B1 / IMO PART 8



**Anti-bacterial**



**Resistance to Hydrolysis (8 years)**  
Resistência à Hidrólise (8 anos)



**Abrasion resistance | Resistência à abrasão**  
800.000+ Martindale

## ASCOT specifications:



**Composition | Composição**  
100% Polyester



**Flammability | Classe ignífuga**  
BS 5852 Part I - Cigarette Test - PASS  
EN 1021-1 - Cigarette Test - PASS  
CA Tech. Bull. 117:2013 / NFPA 260 - Cigarette Test - PASSEN 1021-1 - Cigarette Test - PASS  
CA Tech. Bull. 117:2013 / NFPA 260 - Cigarette Test - PASS



**Abrasion resistance | Resistência à abrasão**  
80.000 Martindale

## BABEL specifications:



**Composition | Composição**  
100% Polyester



**Flammability | Classe ignífuga**  
BS 5852 Part I - Cigarette / EN 1021-1 Cigarette  
CA TB 117:2013 / NFPA 260 Cigarette  
Optional Treatments (back coating)  
BS 5852 Source 0&1 / Crib5 / 1.IM / M1 / B1 / IMO PART 8



**Easy to clean | Fácil de Limpar**



**Abrasion resistance | Resistência à abrasão**  
350.000 Martindale

## BALTIC specifications:



**Composition | Composição**  
100% Polyester



**Flammability | Classe ignífuga**  
BS 5852 Part I - Cigarette / EN 1021-1 Cigarette  
CA TB 117:2013 / NFPA 260 Cigarette  
Optional Treatments (back coating)  
BS 5852 Source 0&1 / Crib5 / 1.IM / M1 / B1 / IMO PART 8



**Stain resistant | Anti-nódoa**



**Abrasion resistance | Resistência à abrasão**  
35.000+ Martindale

# GRO1 MATERIAL SPECIFICATIONS

by elastrongroup.com

## BOSTON specifications:



**Composition | Composição**  
100% Polyester



**Flammability | Classe ignífuga**  
BS 5852 Part I - Cigarette / EN 1021-1  
Cigarette  
CA TB 117:2013 / NFPA 260 Cigarette  
Optional Treatments (back coating)  
BS 5852 Source 0&1 / Crib5 / 1.IM / M1 /  
B1 / IMO PART 8



**Abrasion resistance | Resistência à  
abrasão**  
80.000 Martindale

## BRISTOL specifications:



**Composition | Composição**  
100% Polyester



**Flammability | Classe ignífuga**  
BS 5852 Part I - Cigarette / EN 1021-1  
Cigarette  
CA TB 117:2013 / NFPA 260 Cigarette  
Optional Treatments (back coating)  
BS 5852 Source 0&1 / Crib5 / 1.IM / M1 /  
B1 / IMO PART 8



**Pet Friendly | Resistente a animais de  
estimação**  
Scratch Resistance



**Abrasion resistance | Resistência à  
abrasão**  
100.000+ Martindale

## BRONX specifications:



**Composition | Composição**  
Surface: 85% Polyester + 15% Nylon  
Backing: 100% Polyester



**Flammability | Classe ignífuga**  
BS 5852 Part I - Cigarette / EN 1021-1  
Cigarette  
CA TB 117:2013 / NFPA 260 Cigarette  
Optional Treatments (back coating)  
BS 5852 Source 0&1 / Crib5 / 1.IM / M1 /  
B1 / IMO PART 8



**Soft Hand Feeling | Toque Suave**



**Abrasion resistance | Resistência à  
abrasão**  
90.000+ Martindale

## BROOKLYN specifications:



**Composition | Composição**  
Surface: 94% Polyester + 6% Nylon  
Backing: 100% Polyester



**Flammability | Classe ignífuga**  
BS 5852 Part I - Cigarette / EN 1021-1  
Cigarette  
CA TB 117:2013 / NFPA 260 Cigarette  
Optional Treatments (back coating)  
BS 5852 Source 0&1 / Crib5 / 1.IM / M1 /  
B1 / IMO PART 8



**Stain resistant | Anti-nódoo**



**Abrasion resistance | Resistência à  
abrasão**  
50.000 Martindale

## CASINO specifications:



**Composition | Composição**  
100% Polyester



**Flammability | Classe ignífuga**  
BS 5852 Part I - Cigarette / EN 1021-1  
Cigarette  
CA TB 117:2013 / NFPA 260 Cigarette  
Optional Treatments (back coating)  
BS 5852 Source 0&1 / Crib5 / 1.IM / M1 /  
B1 / IMO PART 8



**Stain resistant | Anti-nódoo**



**Pet Friendly | Resistente a animais de  
estimação**  
Scratch Resistance



**Abrasion resistance | Resistência à  
abrasão**  
100.000 Martindale

20

# GRO1 MATERIAL SPECIFICATIONS

by elastrongroup.com

## DALLAS specifications:



### Composition | Composição

Surface: 100% Polyester  
Backing: 70% Regenerated Leather + 30% Polyester



### Flammability | Classe ignífuga

BS 5852 Part I - Cigarette / EN 1021-1 Cigarette  
CA TB 117:2013 / NFPA 260 Cigarette  
Optional Treatments (back coating)  
BS 5852 Source 0&1 / Crib5 / 1.IM / M1 / B1 / IMO PART 8



### Abrasion resistance | Resistência à abrasão

40.000+ Martindale

## DANUBIO specifications:



### Composition | Composição

90% Polyester + 10% Rayon



### Flammability | Classe ignífuga

BS 5852 Part I - Cigarette / EN 1021-1 Cigarette  
CA TB 117:2013 / NFPA 260 Cigarette  
Optional Treatments (back coating)  
BS 5852 Source 0&1 / Crib5 / 1.IM / M1 / B1 / IMO PART 8



### Abrasion resistance | Resistência à abrasão

30.000 Martindale

## DUBAI specifications:



### Composition | Composição

100% Polyester



### Flammability | Classe ignífuga

BS 5852 Part I - Cigarette Test - PASS  
EN 1021-1 - Cigarette Test - PASS  
CA Tech. Bull. 117:2013 / NFPA 260 - Cigarette Test - PASS



### Abrasion resistance | Resistência à abrasão

65.000+ Martindale

## DUBLIN specifications:



### Composition | Composição

100% Polyester



### Flammability | Classe ignífuga

BS 5852 Part I - Cigarette / EN 1021-1 Cigarette  
CA TB 117:2013 / NFPA 260 Cigarette  
Optional Treatments (back coating)  
BS 5852 Source 0&1 / Crib5 / 1.IM / M1 / B1 / IMO PART 8



### Pet Friendly | Resistente a animais de estimação

Scratch Resistance



### Abrasion resistance | Resistência à abrasão

100.000+ Martindale

## FALCON specifications:



Composition | Composição 87% PVC + 11% Cotton + 2% PU (PC)



### Flammability | Classe ignífuga

BS 5852 Part I - Cigarette & Match / EN 1021-1 / 2 Cigarette & Match  
CA TB 117:2013 / NFPA 260 Cigarette



Anti-bacterial



Resistance to Hydrolysis (10 years)  
Resistência à Hidrólise (10 anos)



Chemical Solvents-Free | Isento de Solventes Químicos



Abrasion resistance | Resistência à abrasão

500.000+ Martindale

# GRO1 MATERIAL SPECIFICATIONS

by elastrongroup.com

## GLASGOW specifications:



**Composition | Composição**  
100% Polyester



**Flammability | Classe ignífuga**  
BS 5852 Part I - Cigarette / EN 1021-1 Cigarette  
CA TB 117:2013 / NFPA 260 Cigarette  
Optional Treatments (back coating)  
BS 5852 Source 0&1 / Crib5 / 1.IM / M1 / B1 / IMO PART 8



**Pet Friendly | Resistente a animais de estimação**  
Scratch Resistance



**Abrasion resistance | Resistência à abrasão**  
100.000+ Martindale

## MACAU specifications:



**Composition | Composição**  
100% Polyester



**Flammability | Classe ignífuga**  
BS 5852 Part I - Cigarette / EN 1021-1 Cigarette  
CA TB 117:2013 / NFPA 260 Cigarette  
Optional Treatments (back coating)  
BS 5852 Source 0&1 / Crib5 / 1.IM / M1 / B1 / IMO PART 8



**Stain resistant | Anti-nódoa**



**Abrasion resistance | Resistência à abrasão**  
90.000+ Martindale

## MADEIRA specifications:



**Composition | Composição**  
100% Polyester



**Flammability | Classe ignífuga**  
BS 5852 Part I - Cigarette / EN 1021-1 Cigarette  
CA TB 117:2013 / NFPA 260 Cigarette  
Optional Treatments (back coating)  
BS 5852 Source 0&1 / Crib5 / 1.IM / M1 / B1 / IMO PART 8



**Abrasion resistance | Resistência à abrasão**  
50.000+ Martindale

## MUNICH SUEDE specifications:



**Composition | Composição**  
Surface: 100% Polyester  
Backing: 45% Polyester + 35% PU + 20%



**Flammability | Classe ignífuga**  
BS 5852 Part I - Cigarette / EN 1021-1 Cigarette  
CA TB 117:2013 / NFPA 260 Cigarette  
8



**Resistance to Hydrolysis (10 years)**  
Resistência à Hidrólise (10 anos)



**Abrasion resistance | Resistência à abrasão**  
35.000 Martindale

## NAPPATECH specifications:



**Composition | Composição**  
Surface: 100% PVC  
Backing: 100% Polyester



**Flammability | Classe ignífuga**  
BS 5852 Part I - Cigarette & Match / EN 1021-1 / 2 Cigarette & Match  
CA TB 117:2013 / NFPA 260 Cigarette  
Optional Treatments (back coating)  
Crib5 / 1.IM / M1 / B1



**Anti-bacterial**  
Anti-Mildew | Anti-Mofo



**Resistance to Hydrolysis (10 years)**  
Resistência à Hidrólise (10 anos)



**UV and FAD Resistance (QUV 1000h)**  
Resistência UV e Desgaste



**Resistance to Cold Cracking (-23°C)**  
Resistência à Rotura por Congelamento



**Waterproof | impermeável**



**Pet Friendly | Resistente a animais de estimação**  
Scratch Resistance



**Chemical Solvents-Free | Isento de Solventes Químicos**



**Abrasion resistance | Resistência à abrasão**  
800.000+ Martindale



**IMO RES MSC.307(88) Part 8**

# GRO1 MATERIAL SPECIFICATIONS

by elastrongroup.com

## NOBEL specifications:



**Composition | Composição**  
60% Cotton+ 14% Viscose+ 9% Acrylic  
+ 7% Polyester+ 6% Linen+ 4% Other  
Fabrics



**Flammability | Classe ignífuga**  
BS SBS2 Part I - Cigarette Test - PASS  
EN 1021-1 - Cigarette Test - PASS  
NFPA 260 - Cigarette Test - PASS  
FR - Cigarette & Match - Available with  
Back Coating  
BS 5852 Source O & 1 / Crib 5 / 1.IM



**Abrasion resistance | Resistência à  
abrasão**  
20.000 Martindale

## OMEGA specifications:



**Composition | Composição**  
Surface: 100% Polyurethane  
Backing: 100% Polyester



**Flammability | Classe ignífuga**  
BS 5852 Part I - Cigarette & Match / EN  
1021-1 / 2 Cigarette & Match  
CA TB 117:2013 / NFPA 260 Cigarette  
Optional Treatments (back coating)  
BS 5852 Source 0&1 / Crib5 / 1.IM / M1 /  
B1 / IMO PART 8



**Resistance to Hydrolysis (8 years)**  
Resistência à Hidrólise (8 anos)



IMO RES MSC.307(88) Part 8



**High Scratch Resistance |  
Elevada Resistência a  
Riscos**



**Chemical Solvents-Free |  
Isento de Solventes Químicos**



**Abrasion resistance | Resistência à  
abrasão**  
500.000+ Martindale

## OXFORD specifications:



**Composition | Composição**  
100% Polyester



**Flammability | Classe ignífuga**  
BS 5852 Part I - Cigarette / EN 1021-1  
Cigarette  
CA TB 117:2013 / NFPA 260 Cigarette  
Optional Treatments (back coating)  
BS 5852 Source 0&1 / Crib5 / 1.IM / M1 /  
B1 / IMO PART 8



**Pet Friendly | Resistente a animais de  
estimação**  
Scratch Resistance



**Abrasion resistance | Resistência à  
abrasão**  
100.000+ Martindale

## PACIFICO specifications:



**Composition | Composição**  
100% Polyester



**Flammability | Classe ignífuga**  
BS 5852 Part I - Cigarette / EN 1021-1  
Cigarette  
CA TB 117:2013 / NFPA 260 Cigarette



**Resistance to Hydrolysis**  
Resistência à Hidrólise



**Abrasion resistance | Resistência à  
abrasão**  
80.000+ Martindale

## PARIS specifications:



**Composition | Composição**  
100% Polyester



**Flammability | Classe ignífuga**  
BS 5852 Part I - Cigarette / EN 1021-1  
Cigarette  
CA TB 117:2013 / NFPA 260 Cigarette  
Optional Treatments (back coating)  
BS 5852 Source 0&1 / Crib5 / 1.IM / M1 /  
B1 / IMO PART 8



**Pet Friendly | Resistente a animais de  
estimação**  
Scratch Resistance



**Abrasion resistance | Resistência à  
abrasão**  
100.000+ Martindale

# GRO1 MATERIAL SPECIFICATIONS

by elastrongroup.com

## PICASSO specifications:



**Composition | Composição**  
59% Polyester + 41% Acetate



**Flammability | Classe ignífuga**  
BS 5852 Part I - Cigarette / EN 1021-1  
Cigarette  
CA TB 117:2013 / NFPA 260 Cigarette  
Optional Treatments (back coating)  
BS 5852 Source 0&1 / Crib5 / 1.IM / M1 /  
B1 / IMO PART 8



**Abrasion resistance | Resistência à  
abrasão**  
35.000+ Martindale

## QUEENS specifications:



**Composition | Composição**  
100% Polyester



**Flammability | Classe ignífuga**  
BS 5852 Part I - Cigarette / EN 1021-1  
Cigarette  
CA TB 117:2013 / NFPA 260 Cigarette  
Optional Treatments (back coating)  
BS 5852 Source 0&1 / Crib5 / 1.IM / M1 /  
B1 / IMO PART 8



**Stain resistant | Anti-nódoa**



**Abrasion resistance | Resistência à  
abrasão**  
500.000+ Martindale

## ROMA specifications:



**Composition | Composição**  
100% Polyester



**Flammability | Classe ignífuga**  
BS 5852 Part I - Cigarette Test - PASS  
EN 1021-1 - Cigarette Test - PASS  
CA Tech. Bull. 117:2013 / NFPA 260 -  
Cigarette Test - PASS



**Abrasion resistance | Resistência à  
abrasão**  
40.000 Martindale

## ROYAL SUEDE specifications:



**Composition | Composição**  
100% Polyester



**Flammability | Classe ignífuga**  
BS 5852 Part I - Cigarette Test - PASS  
EN 1021-1 - Cigarette Test - PASS  
CA Tech. Bull. 117:2013 / NFPA 260 -  
Cigarette Test - PASS



**Resistance to Hydrolysis  
Resistência à Hidrólise**



**Abrasion resistance | Resistência à  
abrasão**  
30.000+ Martindale

## SCOTLAND specifications:



**Composition | Composição**  
100% Polyester



**Flammability | Classe ignífuga**  
BS 5852 Part I - Cigarette Test - PASS  
EN 1021-1 - Cigarette Test - PASS  
CA Tech. Bull. 117:2013 / NFPA 260 -  
Cigarette Test - PASS  
FR - Cigarette & Match - Available with  
Back Coating



**Pet Friendly | Resistente a animais de  
estimação**  
Scratch Resistance



**Abrasion resistance | Resistência à  
abrasão**  
100.000+ Martindale

24

# GRO1 MATERIAL SPECIFICATIONS

by elastrongroup.com

## SEATTLE specifications:



**Composition | Composição**  
100% Polyester



**Flammability | Classe ignífuga**  
BS 5852 Part I - Cigarette Test - PASS  
EN 1021-1 - Cigarette Test - PASS  
CA Tech. Bull. 117:2013 / NFPA 260 -  
Cigarette Test - PASS  
FR - Cigarette & Match - Available with  
Back Coating



**Pet Friendly | Resistente a animais de  
estimação**  
Scratch Resistance



**Abrasion resistance | Resistência à  
abrasão**  
90.000 Martindale



**Easy to clean | Fácil de Limpar**

## SWING specifications:



**Composition | Composição**  
60,5% Acrylic + 39,5% Polyester



**Flammability | Classe ignífuga**  
BS 5852 Part I - Cigarette Test - PASS  
EN 1021-1 - Cigarette Test - PASS  
CA Tech. Bull. 117:2013 / NFPA 260 -  
Cigarette Test - PASS



**Abrasion resistance | Resistência à  
abrasão**  
50.000 Martindale

## TRIBU specifications:



**Composition | Composição**  
100% Polyester



**Flammability | Classe ignífuga**  
BS 5852 Part I - Cigarette / EN 1021-1  
Cigarette  
CA TB 117:2013 / NFPA 260 Cigarette  
Optional Treatments (back coating)  
BS 5852 Source 0&1 / Crib5 / 1.IM / M1 /  
B1 / IMO PART 8



**Stain resistant | Anti-nódoa**



**Abrasion resistance | Resistência à  
abrasão**  
35.000+ Martindale

## VIENNA specifications:



**Composition | Composição**  
100% Polyester



**Flammability | Classe ignífuga**  
BS 5852 Part I - Cigarette / EN 1021-1  
Cigarette  
CA TB 117:2013 / NFPA 260 Cigarette  
Optional Treatments (back coating)  
BS 5852 Source 0&1 / Crib5 / 1.IM / M1 /  
B1 / IMO PART 8



**Stain resistant | Anti-nódoa**



**Abrasion resistance | Resistência à  
abrasão**  
65.000+ Martindale

25

# GRO2 MATERIAL SPECIFICATIONS

\_Fabric by panaz.com

## ALBA specifications:



**Composition | Composição**  
100% Polyester with microporous Film and FR Backcoating



**Flammability | Classe ignífuga**  
BS 5852 IGN Source 5, BS 7176 Medium Hazard, BS EN 1021 1/2, CAL TB 117, IMO FTP CODE 2010 Part 8, NFPA 260, Italian Classe Uno UNI 9175 (IIM) UPHOLSTERY



**Stain resistant | Anti-nódoa**  
Anti-microbial



PFAS Free



Waterproof | Impermeável



**Abrasion resistance | Resistência à abrasão**  
130.000 Martindale

## EVE specifications:



**Composition | Composição**  
100% Polyester with Microporous Film and FR Backcoating



**Flammability | Classe ignífuga**  
BS 5852 IGN Source 5, BS 7176 Medium Hazard, BS EN 1021 1/2, CAL TB 117, IMO FTP CODE 2010 Part 8, NFPA 260



**Stain resistant | Anti-nódoa**  
Anti-microbial



AB2998 Compliant, Prop 65 Compliant



Waterproof | Impermeável



**Abrasion resistance | Resistência à abrasão**  
40.000 Martindale

## HIGHLAND specifications:



**Composition | Composição**  
100% Polyester with Microporous Film and FR Backcoating



**Flammability | Classe ignífuga**  
B1, BS 5852 IGN Source 5, BS 7176 Medium Hazard, BS EN 1021 1/2, CAL TB 117, IMO FTP CODE 2010 Part 8, NFPA 260, IMO FTP Code 2010 Part 5, Italian Classe Uno UNI 9175 (IIM) UPHOLSTERY



**Stain resistant | Anti-nódoa**



Anti-microbial



Waterproof | Impermeável



**Abrasion resistance | Resistência à abrasão**  
70.000 Martindale

## KILDA specifications:



**Composition | Composição**  
100% Polyester with Microporous Film and FR Laminate



**Flammability | Classe ignífuga**  
B1, BS 5852 IGN Source 5, BS 7176 Medium Hazard, BS EN 1021 1/2, CAL TB 117, IMO FTP CODE 2010 Part 8, NFPA 260



**Stain resistant | Anti-nódoa**  
Anti-microbial



Heavy Metals Free, Latex Free, Phthalate Free



Waterproof | Impermeável



**Abrasion resistance | Resistência à abrasão**  
100.000+ Martindale

## LUXE specifications:



**Composition | Composição**  
100% Polyester with Microporous Film and FR Laminate



**Flammability | Classe ignífuga**  
BS 5852 IGN Source 5, BS 7176 Medium Hazard, BS EN 1021 1/2, CAL TB 117, IMO FTP CODE 2010 Part 8, NFPA 260



**Stain resistant | Anti-nódoa**



Anti-microbial



Waterproof | impermeável



**Abrasion resistance | Resistência à abrasão**  
70.000 Martindale

# GRO2

\_Fabric by panaz.com

## MARNA specifications:



**Composition | Composição**

100% Polyester with Microporous Film and FR Laminate



**Flammability | Classe ignifuga**

B1, BS 5852 IGN Source 5, BS 7176 Medium Hazard, BS EN 1021 1/2, CAL TB 117, IMO FTP CODE 2010 Part 8, NFPA 260



Stain resistant | Anti-nódoo



Anti-microbial



Waterproof | impermeável



Abrasion resistance | Resistência à abrasão  
75.000 Martindale

## RIVA specifications:



**Composition | Composição**

100% Polyester with Microporous Film and FR Laminate



**Flammability | Classe ignifuga**

BS 5852 IGN Source 5, BS 7176 Medium Hazard, BS EN 1021 1/2, CAL TB 117, IMO FTP CODE 2010 Part 8, NFPA 260, Italian



Stain resistant | Anti-nódoo



Anti-microbial



Waterproof | impermeável



Abrasion resistance | Resistência à abrasão  
60.000 Martindale

# GRO2 MATERIAL SPECIFICATIONS

\_Vinyl by panaz.com

## ANTIQUE specifications:



**Composition | Composição**  
PVC/Acrylic PU, Basecloth: Cotton/  
Polyester



**Stain resistant | Anti-nódoa**  
Anti-microbial



**Waterproof | Impermeável**



**Flammability | Classe ignífuga**  
BS 5852 IGN Source 5, BS 7176 Medium  
Hazard, BS EN 1021  
1/2, CAL TB 117, IMO FTP CODE 2010 Part  
8, NFPA 260, Italian  
Classe Uno UNI 9175 (IIM) UPHOLSTERY



**Latex Free, No Heavy Metals,**  
Phthalate Free



**Abrasion resistance | Resistência à**  
**abrasão**  
100.000+ Martindale

## ASTON specifications:



**Composition | Composição**  
Coating: PVC/PU/Acryltron, Basecloth:  
Cotton/Polyester



**Stain resistant | Anti-nódoa**  
Anti-microbial



**Waterproof | Impermeável**



**Flammability | Classe ignífuga**  
BS 5852 IGN Source 5, BS 7176 Medium  
Hazard, BS EN 1021  
1/2, CAL TB 117, IMO FTP CODE 2010 Part  
8, NFPA 260,  
EN13501-1 Wallcovering, Italian Classe



**Latex Free, No Heavy Metals,**  
Phthalate Free



**Abrasion resistance | Resistência à**  
**abrasão**  
1.000.000 Martindale

## BROOKLAND specifications:



**Composition | Composição**  
Coating: PVC/PU/Acryltron, Basecloth:  
Cotton/Polyester



**Stain resistant | Anti-nódoa**



**Waterproof | Impermeável**



**Flammability | Classe ignífuga**  
BS 5852 IGN Source 5, BS 7176 Medium  
Hazard, BS EN 1021  
1/2, CAL TB 117, IMO FTP CODE 2010 Part  
8, M2, NFPA 260,  
EN13501-1 Wallcovering, Italian Classe  
Uno UNI 9175 (IIM)  
UPHOLSTERY



**Anti-microbial**



**Abrasion resistance | Resistência à**  
**abrasão**  
1.000.000 Martindale

## SOFT TOUCH PRO specifications:



**Composition | Composição**  
Coating: PVC/PU/Acryltron, Basecloth:  
Viscose/Polyester



**Stain resistant | Anti-nódoa**  
Anti-microbial



**Waterproof | Impermeável**



**Flammability | Classe ignífuga**  
BS 5852 IGN Source 5, BS 7176 Medium  
Hazard, BS EN 1021  
1/2, CAL TB 117, IMO FTP CODE 2010 Part  
8, NFPA 260



**Latex Free, No Heavy Metals,**  
Phthalate Free, REACH  
Compliant



**Abrasion resistance | Resistência à**  
**abrasão**  
350.000 Martindale

## VINTAGE specifications:



**Composition | Composição**  
100% Polyester with Microporous Film  
and FR Laminate



**Stain resistant | Anti-nódoa**



**Waterproof | impermeável**



**Flammability | Classe ignífuga**  
BS 5852 IGN Source 5, BS 7176 Medium  
Hazard, BS EN 1021  
1/2, CAL TB 117, IMO FTP CODE 2010 Part  
8, NFPA 260



**Anti-microbial**



**Abrasion resistance | Resistência à**  
**abrasão**  
70.000 Martindale

# GRO2 MATERIAL SPECIFICATIONS

\_Vinyl by panaz.com

## ZEST specifications:



### **Composition | Composição**

Coating: PVC/PU/Acryltron, Basecloth:  
Cotton/Polyester



### **Flammability | Classe ignifuga**

BS 5852 IGN Source 5, BS 7176 Medium  
Hazard, BS EN 1021  
1/2, CAL TB 117, IMO FTP CODE 2010 Part  
8, M2, NFPA 260



**Stain resistant | Anti-nódoa  
Anti-microbial**



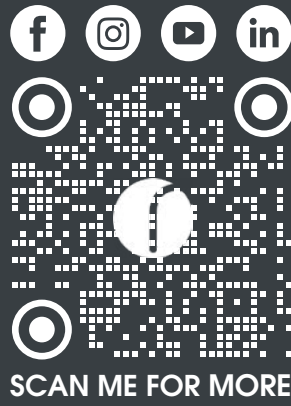
**Latex Free, No Heavy Metals,  
Phthalate Free**



**Waterproof | Impermeável**



**Abrasion resistance | Resistência à  
abrasão**  
200.000 Martindale



TP.01\_2026\_MSDTL\_SWATCHBOOK

R. Zona Industrial Nascente/Poente nº102  
Apartado 34, 3750-353 Barrô - Águeda - Portugal

Tlf: +351 234 610 130 | Fax: +351 234 301 957

[info@msilva.com.pt](mailto:info@msilva.com.pt)