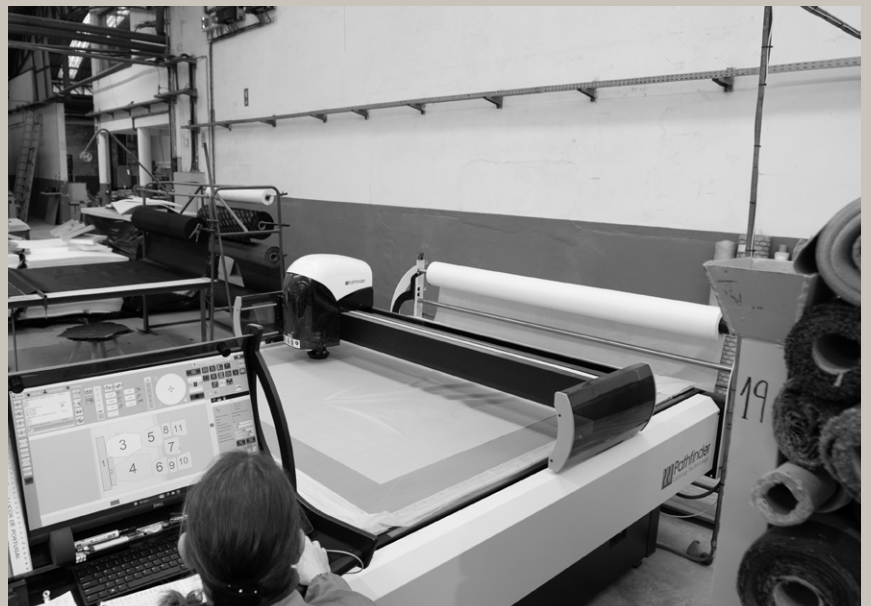


SWATCH BOOK 2026



METAL FINISHES

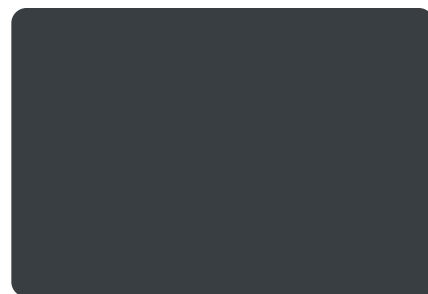
_FT - sandy texture polyester | poliéster de textura fina



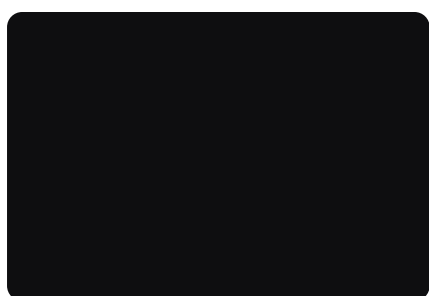
PO22 - RAL 9010



EP80 - RAL 7042



PO59 - RAL 7016



EP55 - RAL 9005



PO68 - RAL 5003



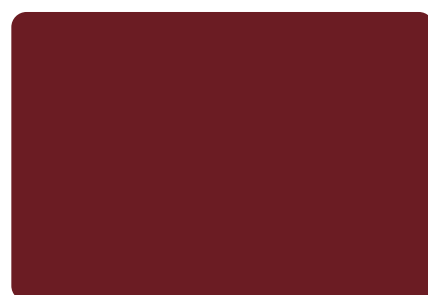
PO86 - RAL 6011



PO76 - RAL 7044



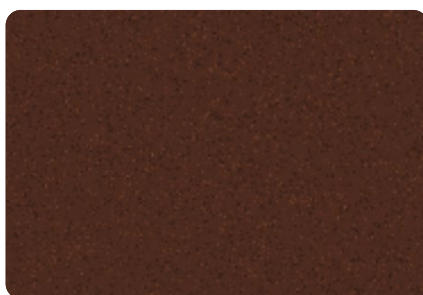
EP0103 - RAL 3012



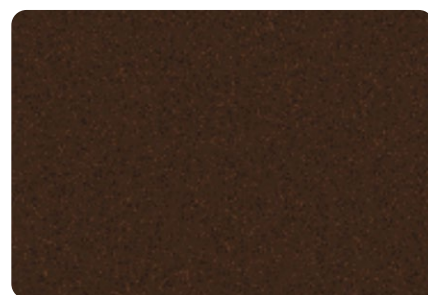
PO64 - RAL 3004



EP0107 - RAL 1036



EP0110 - Granite Rust



EP0109 - Bond Golf Marrone

_PA polished aluminium finish | alumínio polido



PA001

2

WOOD FINISHES

_FX - ash wood | madeira de freixo



FX0149 - Natural Ash



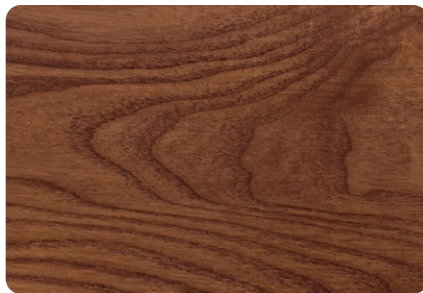
FX0150 - Beech



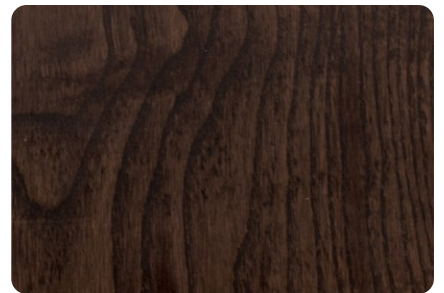
FX0151 - Honey



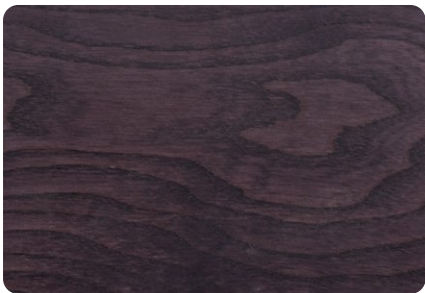
FX0152 - Light Brown



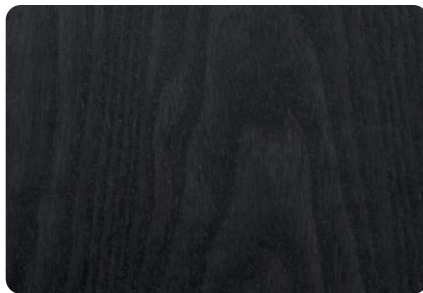
FX0153 - Medium Brown



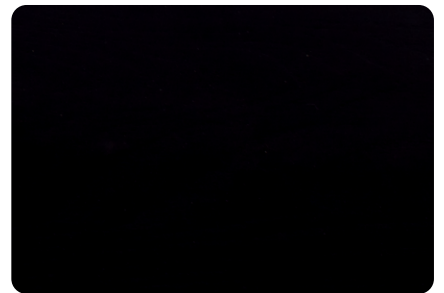
FX0154 - Dark Brown



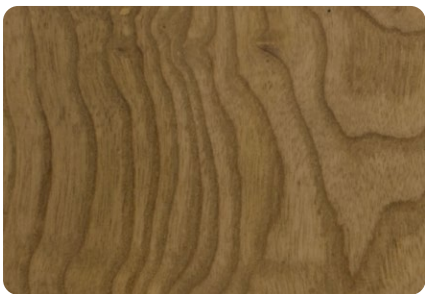
FX0155 - Red Wine



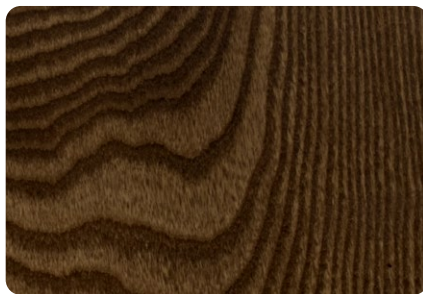
FX0156 - Dark Wengé



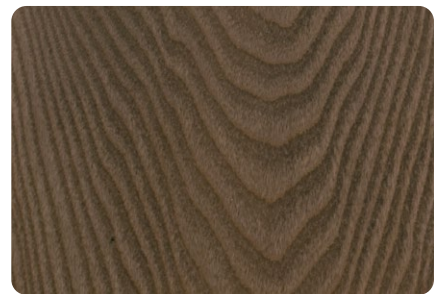
FX0157 - Black



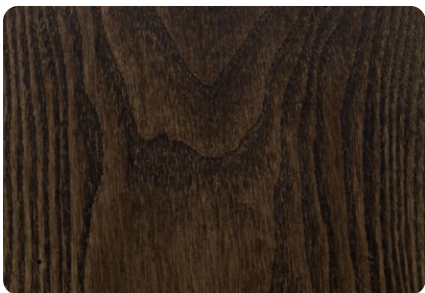
FX0158 - Oak



FX0159 - Walnut



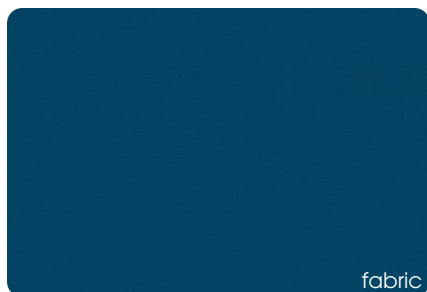
FX0160 - Light Charcoal



FX0161 - Charcoal

GR01

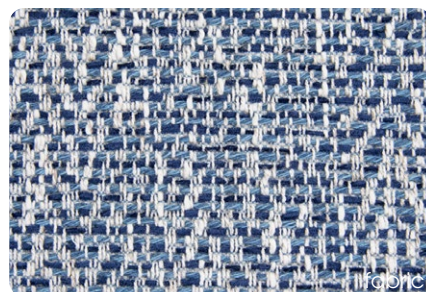
fabrics and vinyls by elastrongroup.com



Paris - Ocean



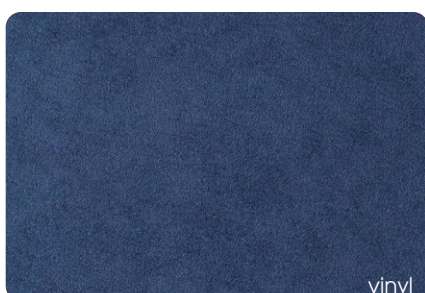
Babel - Blue



Nobel - Ocean



Tribu - Ocean



Munich Suede - Blue



Bristol - Ocean



Bronx - Ocean



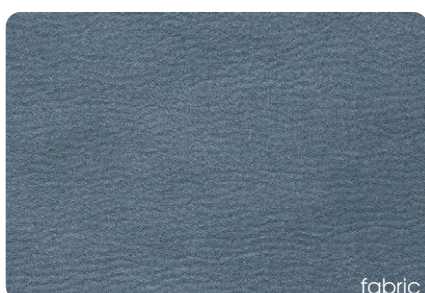
Omega - Blue



Dublin - Ocean



Vienna - Safira



Munich Suede - Sky



Swing - Sky



Boston - Sky



Roma - Aquamarine



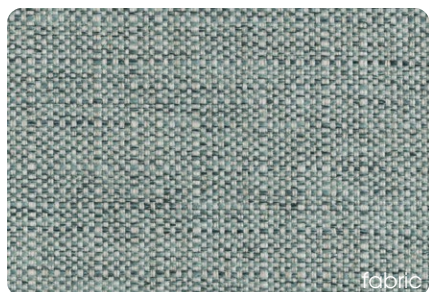
Seattle - Sky

material specifications

www.msilva.com.pt

GRO1

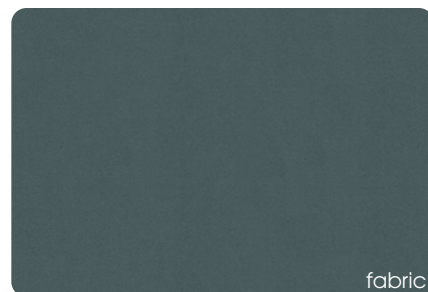
fabrics and vinyls by elastrongroup.com



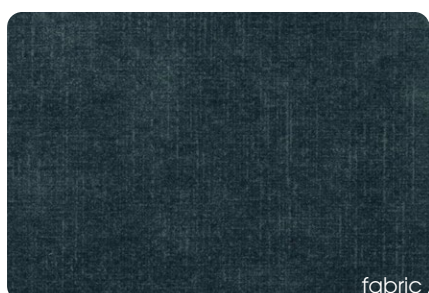
Babel - Safira



Munich Suede - Safira



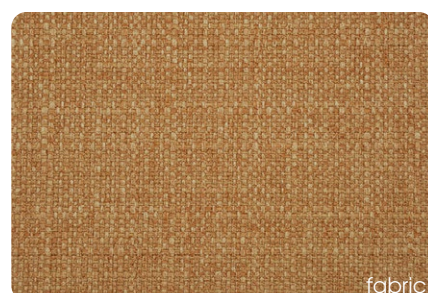
Casino - Safira



Macau - Petrol



Royal Suede - Camel



Madeira - Terra



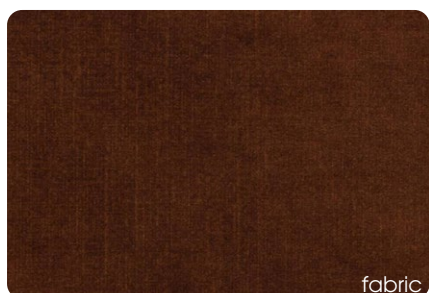
Dallas - Cuoio



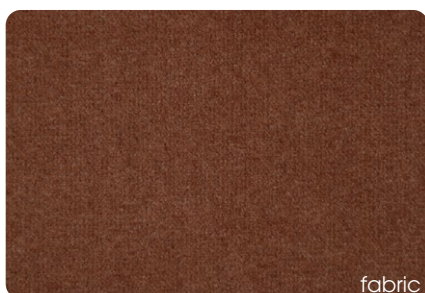
Nappatech - Cappucino



Royal Suede - Cuoio



Macau - Terra



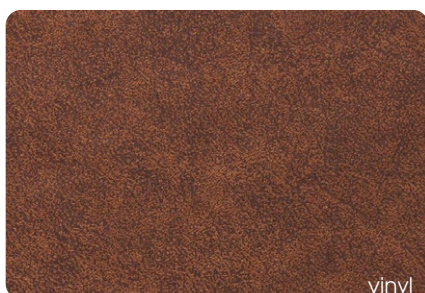
Casino - Cuoio



Vienna - Sienna



Falcon - Cuoio



Dallas - Cognac



Nobel - Truffle

5

GR01

fabrics and vinyls by elastrongroup.com



Picasso - Sand



Danubio - Trufa



Pacifico - Taupe



Babel - Taupe



Bristol - Mouse



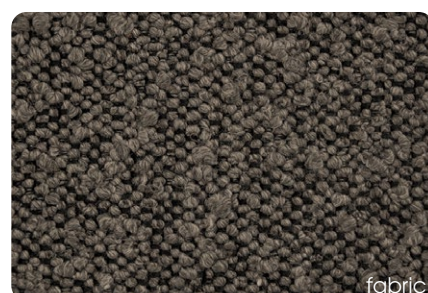
Royal Suede - Caribou



Dublin - Mouse



Casino - Ebony



Ascot - Mouse



Seattle - Lima



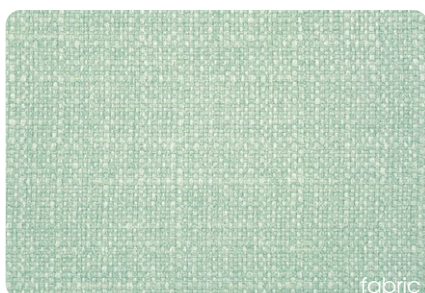
Tribu - Green



Boston - Green



Boston Water - Green



Madeira Water - Green



Brooklyn - Bottle

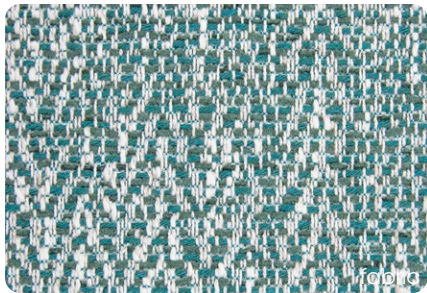
material specifications

www.msilva.com.pt

6

GR01

fabrics and vinyls by elastrongroup.com



Nobel - Emerald



Paris - Green



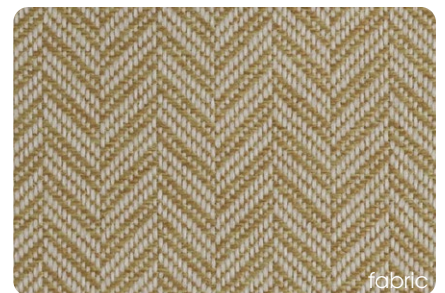
Vienna - Emerald



Dubai Deep - Green



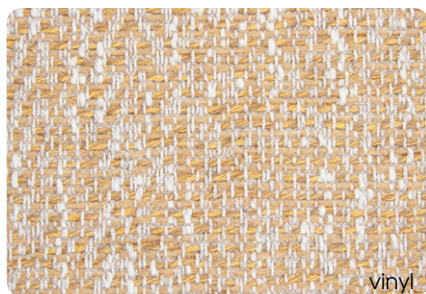
Bronx - Yellow



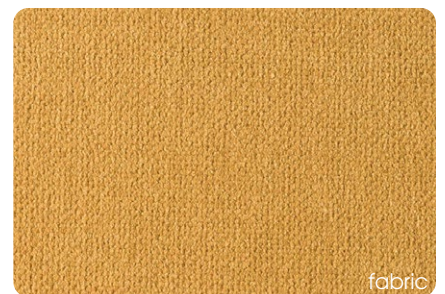
Glasgow - Mustard



Tribu - Mostaza



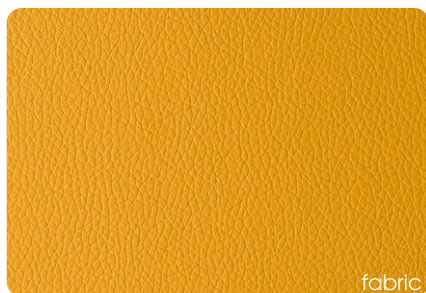
Nobel - Mostaza



Apollo - Yellow



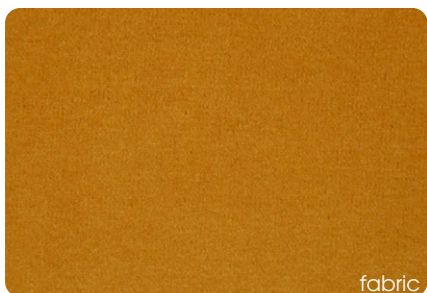
Babel - Yellow



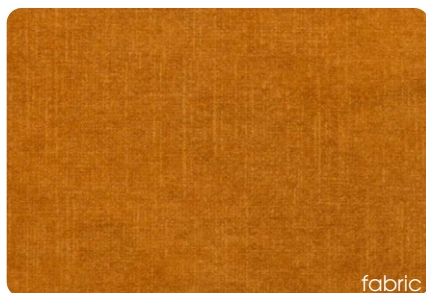
Omega - Mostaza



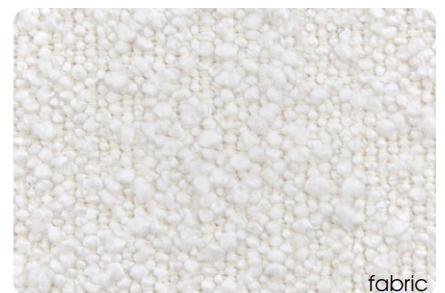
Ascot - Mostaza



Casino - Mostaza



Macau - Gold



Ascot - Nata

GR01

fabrics and vinyls by elastrongroup.com



Munich Suede - Nata

fabric



Seattle - Cream

fabric



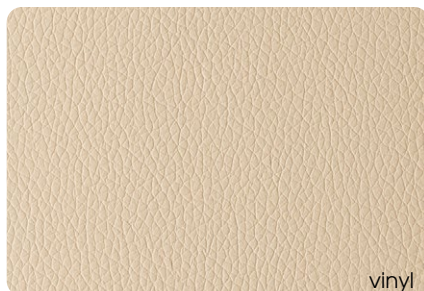
Apollo - Cream

fabric



Nobel - Beige

fabric



Omega - Beige

vinyl



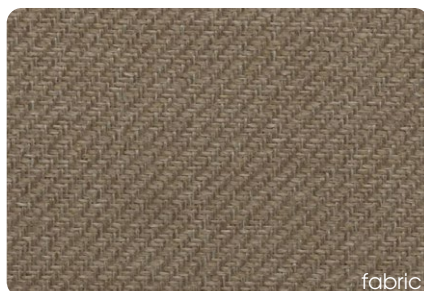
Dublin - Beige

fabric



Ascot - Champagne

fabric



Oxford - Beige

fabric



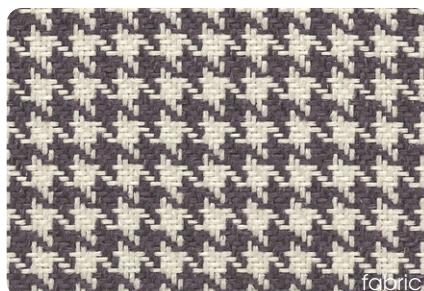
Bristol - Beige

fabric



Vienna - Lavanda

fabric



Bristol - Purple

fabric



Swing Old - Purple

fabric



Paris - Lavanda

fabric



Baltic Deep - Purple

fabric



Paris - Purple

fabric

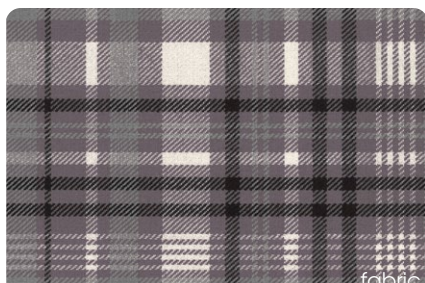
material specifications

GRO1

fabrics and vinyls by elastrongroup.com



Queens - Purple



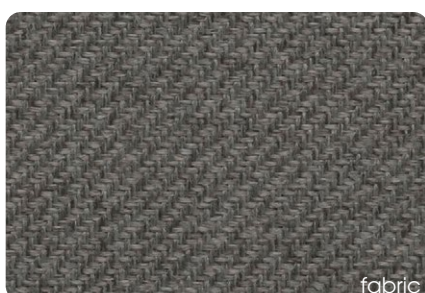
Scotland - Purple



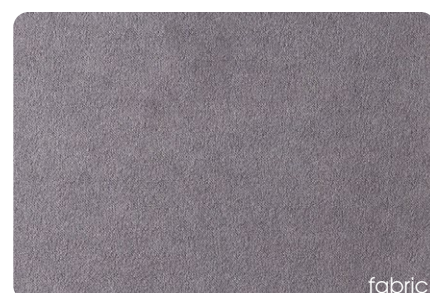
Danubio - Purple



Arizona - Purple



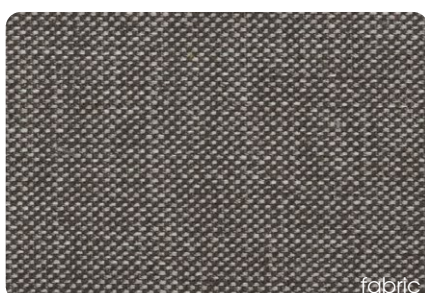
Oxford - Ash



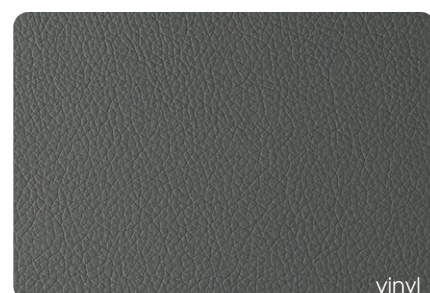
Royal Suede - Medium Grey



Bristol - Anthracite



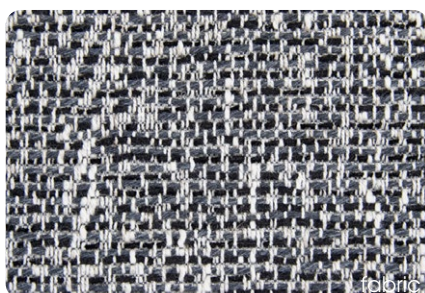
Roma - Graphite



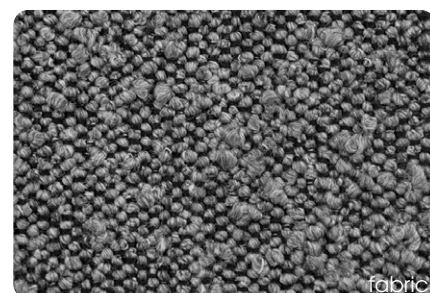
Omega - Ash



Seattle - Anthracite



Nobel - Carbon



Ascot - Graphite



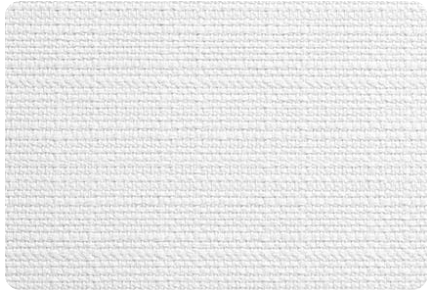
Bronx - Black

material specifications

www.msilva.com.pt

GR02

_Fabrics by panaz.com



Alba - 829 Parchment



Eve - 837 Stone



Alba - 841 Biscotti



Luxe - 805 Cream



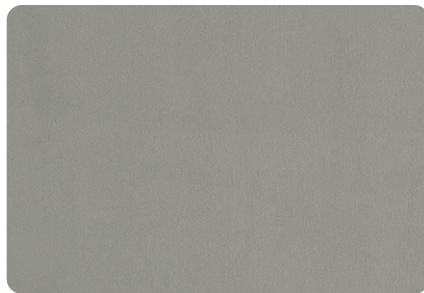
Alba - 321 Wheat



Riva - 919 Zinc



Mama - 901 Silver



Luxe - 919 Zinc



Alba - 911 Steel



Mama - 919 Zinc



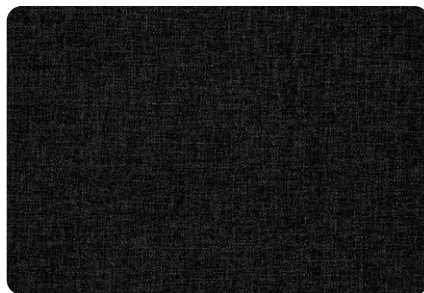
Alba - 902 Slate



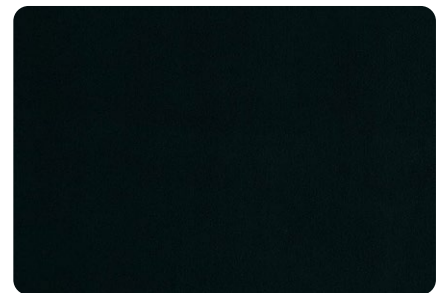
Mama - 903 Charcoal



Alba - 949 Noir



Highland - 903 Charcoal



Luxe - 900 Black

10

GR02

_Fabrics by panaz.com



Alba - 826 Taupe



Alba - 925 Putty



Eve 835 - Hessian



Alba - 971 Nickel



Highland - 858 Cobble



Highland - 877 Oyster



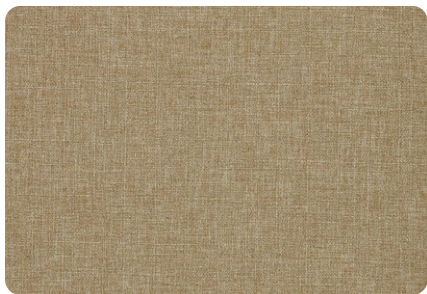
Riva - 823 Chablis



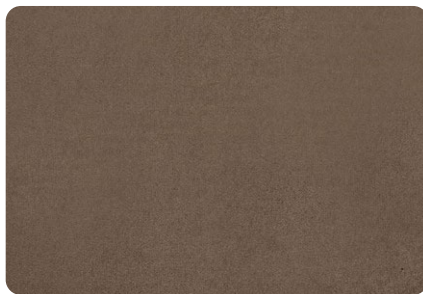
Luxe - 823 Chablis



Riva - 905 Dove



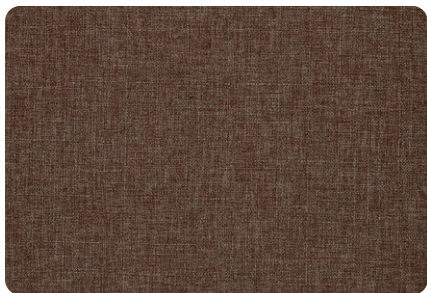
Highland - 823 Chablis



Luxe - 703 Mink



Riva - 703 Mink



Highland - 703 Mink



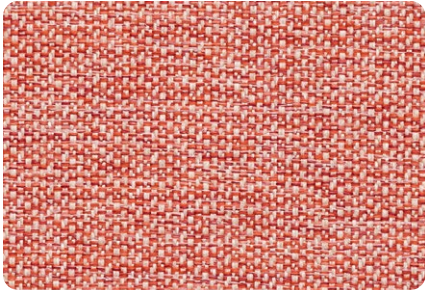
Alba - 702 Chocolate



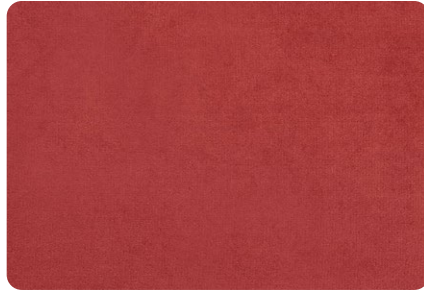
Marna - 814 Espresso

GR02

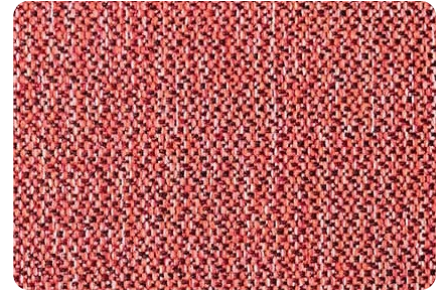
_Fabrics by panaz.com



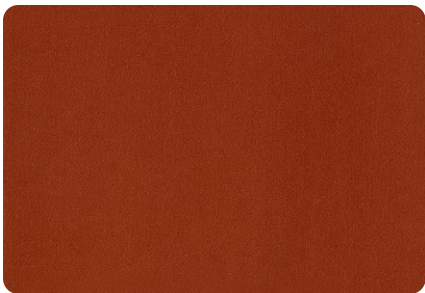
Riva - 637 Soft Peach



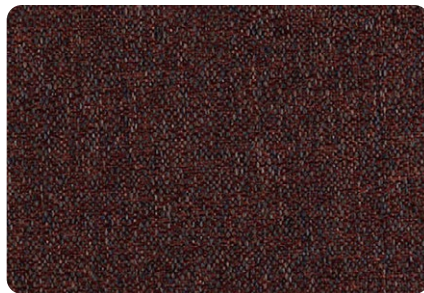
Luxe - 574 Dark Coral



Riva - 574 Dark Coral



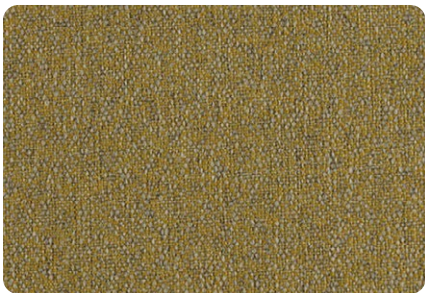
Luxe - 408 Terracotta



Kilda - 439 Raspberry



Marna - 300 Gold



Kilda - 238 Citrus



Luxe - 238 Citrus



Riva - 238 Citrus



Eve - 300 Gold



Kilda - 618 Blush



Highland - 692 Heather



Alba - 642 Thistle



Eve - 156 Grape



Marna - 202 Amethyst

12

GR02

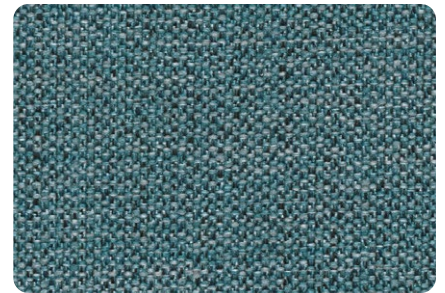
_Fabrics by panaz.com



Kilda - 134 Sky



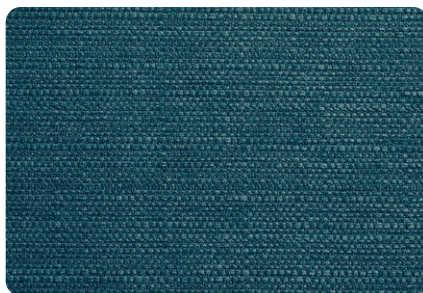
Luxe - 134 Sky



Riva - 134 Sky



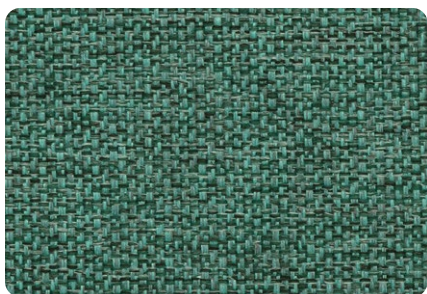
Highland - 110 Pacific



Alba - 111 Peacock



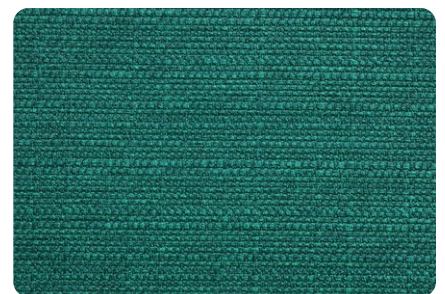
Luxe - 129 Ocean



Riva - 129 Ocean



Eve - 151 Teal



Alba - 151 Teal



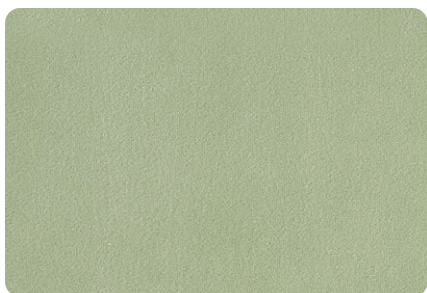
Luxe - 151 Teal



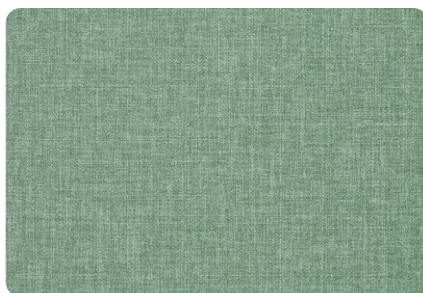
Alba - 952 Platinum



Riva - 271 Celadon



Luxe - 271 Celadon



Highland - 271 Celadon

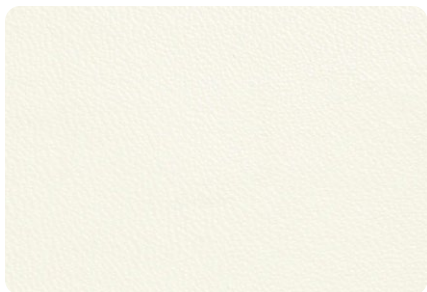


Alba - 251 Eau De Nil

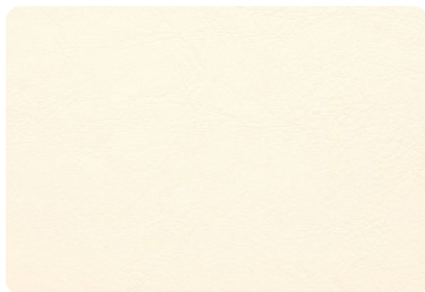
13

GR02

_Vinyls by panaz.com



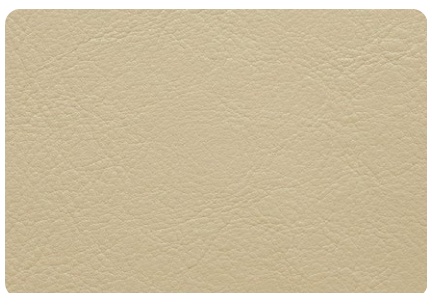
Zest - 005 Chalk



Aston - 813 Chalk



Vintage - 805 Cream



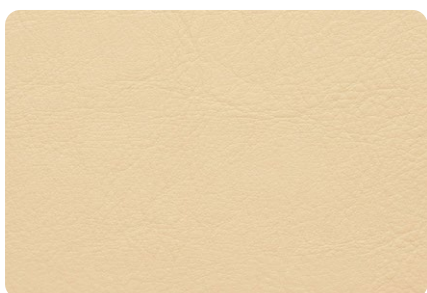
Aston - 837 Stone



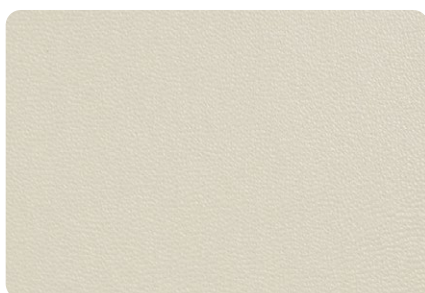
Zest - 805 Cream



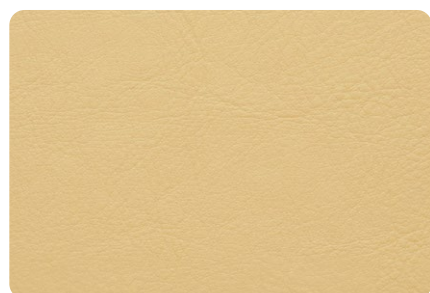
Soft Touch Pro - 905 Dove



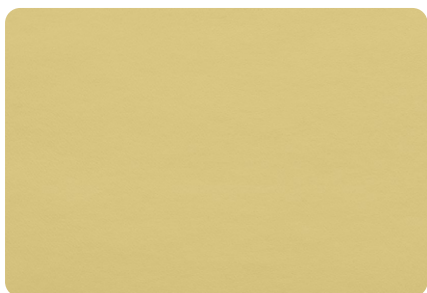
Aston - 805 Cream



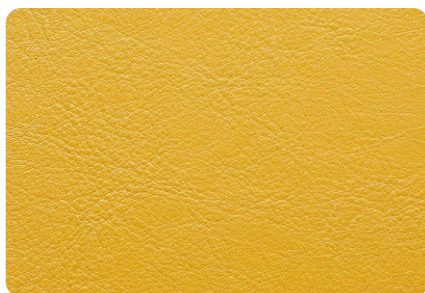
Brookland - 805 Cream



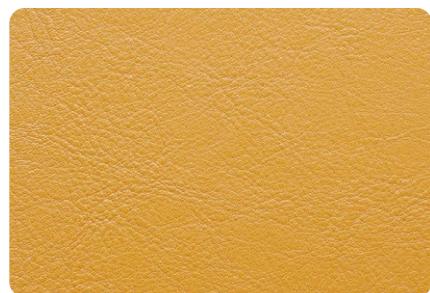
Aston - 507 Rich Ivory



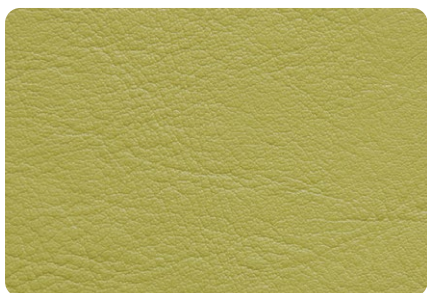
Zest - 326 Hay



Aston - 238 Citrus



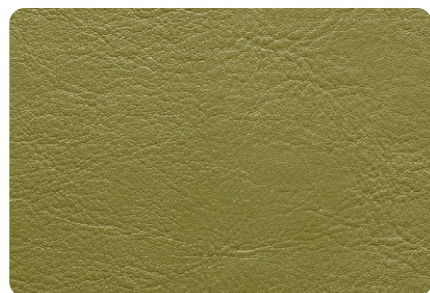
Aston - 314 Mustard



Aston - 233 Pistachio



Aston - 220 Light Green



Aston - 226 Lime

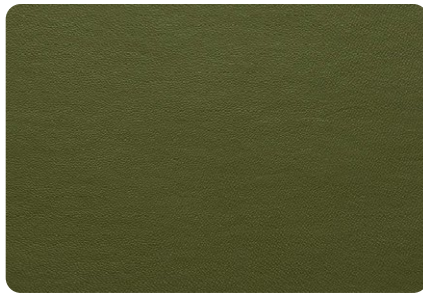
14

GR02

_Vinyls by panaz.com



Zest - 209 Wasabi



Zest - 229 Forest



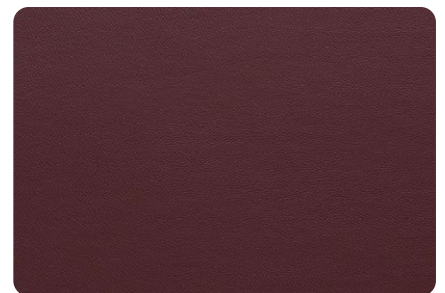
Brookland - 229 Forest



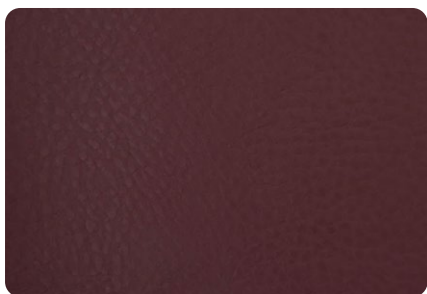
Aston - 444 Cherry



Soft Touch Pro - 437 Tuscan Red



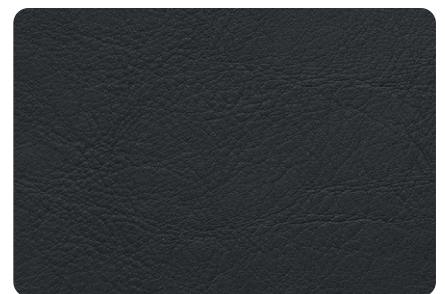
Zest - 414 Wine



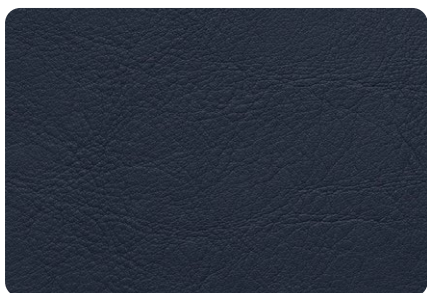
Brookland - 407 Burgundy



Aston - 407 Burgundy



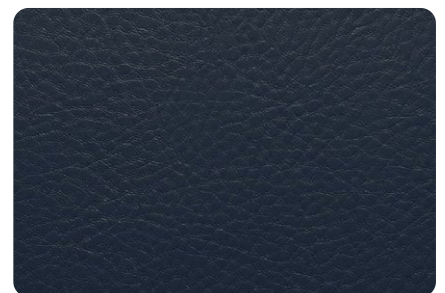
Aston - 116 Navy



Aston - 105 Indigo



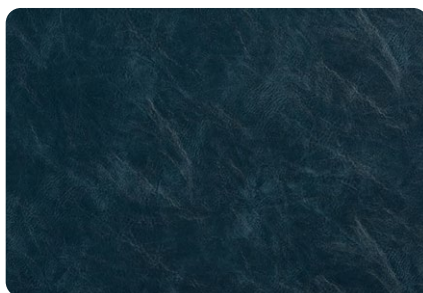
Zest - 105 Indigo



Brookland - 116 Navy



Soft Touch Pro - 192 Ink



Antique - 105 Indigo



Vintage - 105 Indigo

15

GR02

_Vinyls by panaz.com



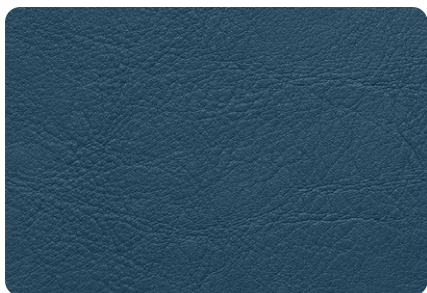
Aston - 108 Delph



Aston - 134 Sky



Brookland - 108 Delph



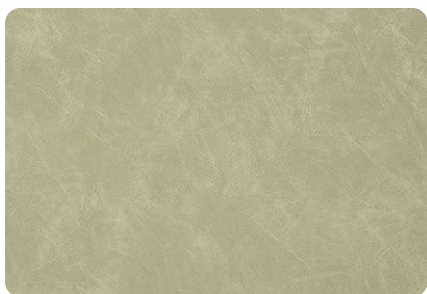
Aston - 100 Blue



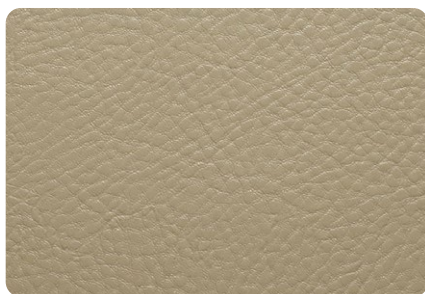
Vintage - 505 Pearl



Aston - 952 Platinum



Antique - 835 Hessian



Brookland - 925 Putty



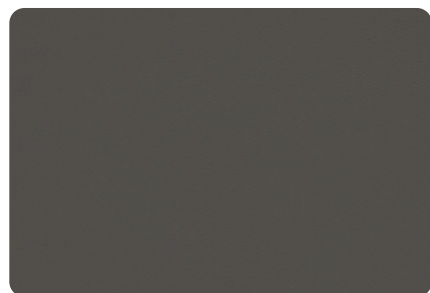
Vintage - 836 Sand



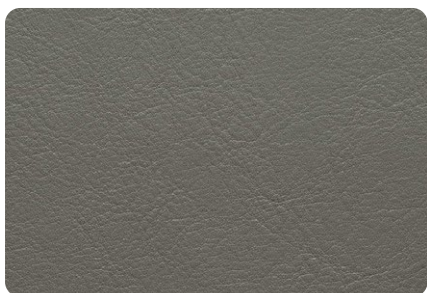
Soft Touch Pro - 837 Stone



Brookland - 911 Steel



Zest - 906 Ash



Aston - 906 Ash



Soft Touch Pro - 503 Astral Grey



Brookland - 904 Pewter

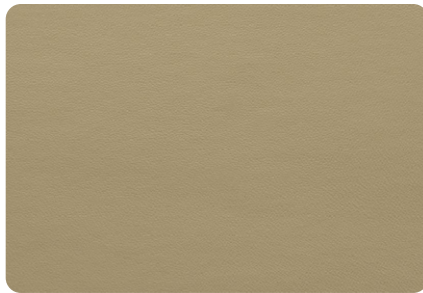
16

GR02

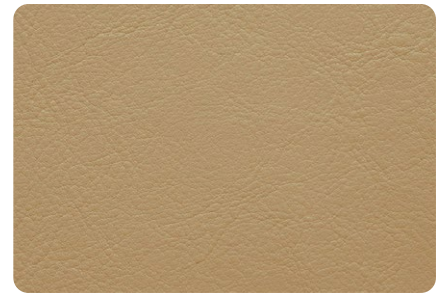
_Vinyls by panaz.com



Aston - 954 Graphite



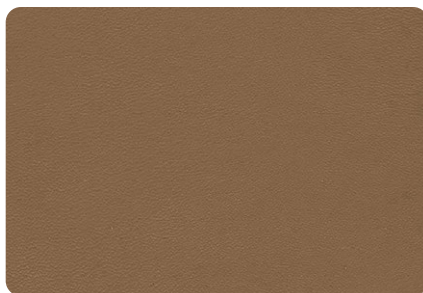
Zest - 823 Chablis



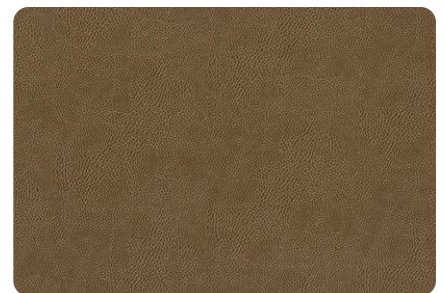
Aston - 823 Chablis



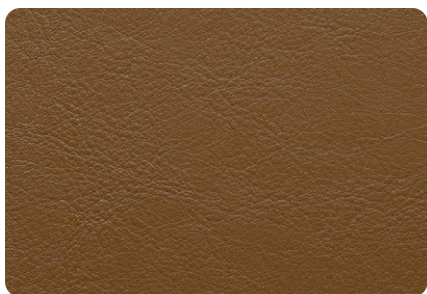
Vintage - 823 Chablis



Zest - 843 Chai



Vintage - 815 Buff



Aston - 815 Buff



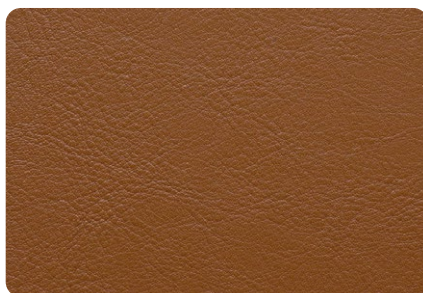
Aston - 877 Oyster



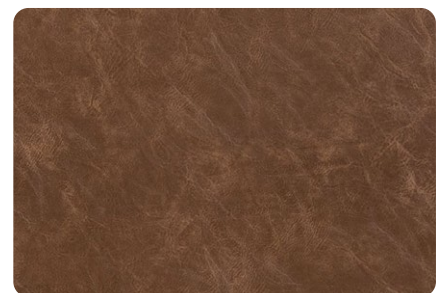
Brookland - 744 Saddle



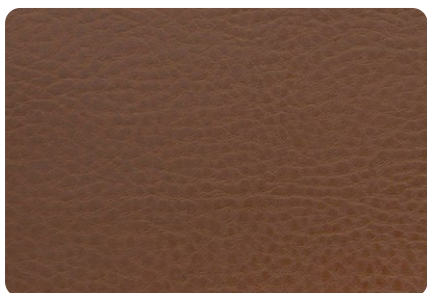
Vintage - 801 Tan



Aston - 801 Tan



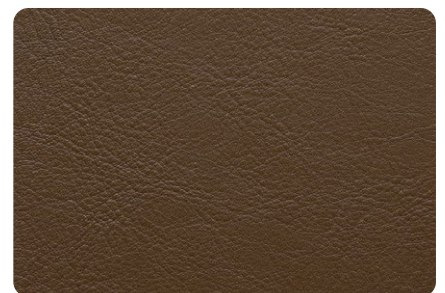
Antique - 817 Chestnut



Brookland - 801 Tan



Soft Touch Pro - 826 Taupe

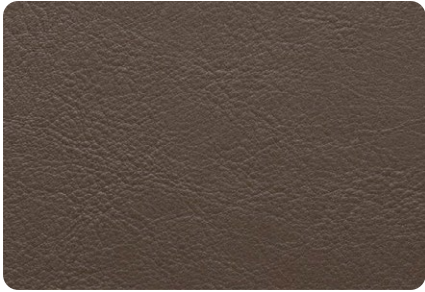


Aston 807 - Mushroom

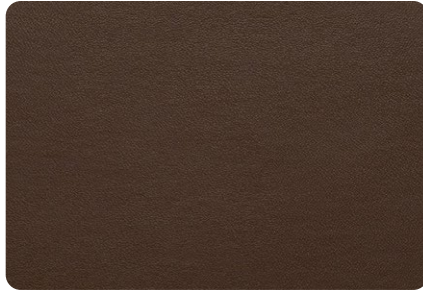
17

GR02

_Vinyls by panaz.com



Aston - 703 Mink



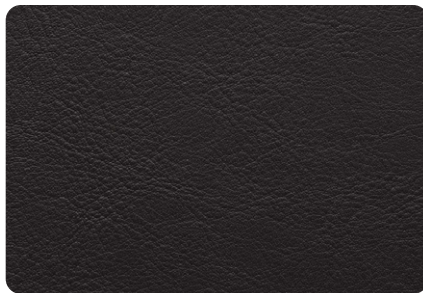
Zest - 807 Mushroom



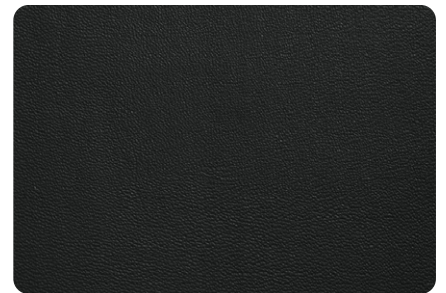
Aston - 953 Gunmetal



Soft Touch Pro - 900 Black



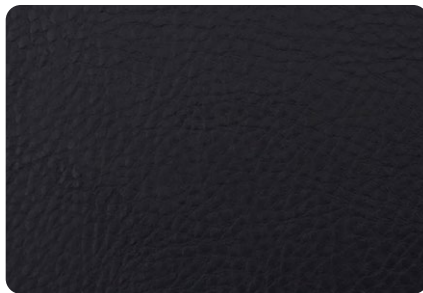
Aston - 900 Black



Zest - 900 Black



Vintage - 900 Black



Brookland - 900 Black

GRO1 MATERIAL SPECIFICATIONS

by elastrongroup.com

APOLLO specifications:



Composition | Composição
100% Polyester



Flammability | Classe ignífuga
BS 5852 Part 1 - Cigarette / EN 1021-1 Cigarette
CA TB 117:2013 / NFPA 260 Cigarette
Optional Treatments (back coating)
BS 5852 Source 0&1 / Crib5 / 1.IM / M1 / B1 / IMO PART 8



Stain resistant | Anti-nódoa
Anti-microbial



Hydrocare



Pet Friendly | Resistente a animais de estimação
Scratch Resistance



Waterproof | Impermeável



Abrasion resistance | Resistência à abrasão
300.000+ Martindale

ARIZONA specifications:



Composition | Composição
Surface: 91% PVC + 9% PU
Backing: 95% Polyester +5% Cotton



Flammability | Classe ignífuga
FLAMMABILITY NORMS
BS 5852 Part 1 - Cigarette & Match / EN 1021-1 / 2 Cigarette & Match
CA TB 117:2013 / NFPA 260 Cigarette
Optional Treatments (back coating)
BS 5852 Source 0&1 / Crib5 / 1.IM / M1 / B1 / IMO PART 8



Anti-bacterial



Resistance to Hydrolysis (8 years)
Resistência à Hidrólise (8 anos)



Abrasion resistance | Resistência à abrasão
800.000+ Martindale

ASCOT specifications:



Composition | Composição
100% Polyester



Flammability | Classe ignífuga
BS 5852 Part 1 - Cigarette Test - PASS
EN 1021-1 - Cigarette Test - PASS
CA Tech. Bull. 117:2013 / NFPA 260 - Cigarette Test - PASSEN 1021-1 - Cigarette Test - PASS
CA Tech. Bull. 117:2013 / NFPA 260 - Cigarette Test - PASS



Abrasion resistance | Resistência à abrasão
80.000 Martindale

BABEL specifications:



Composition | Composição
100% Polyester



Flammability | Classe ignífuga
BS 5852 Part 1 - Cigarette / EN 1021-1 Cigarette
CA TB 117:2013 / NFPA 260 Cigarette
Optional Treatments (back coating)
BS 5852 Source 0&1 / Crib5 / 1.IM / M1 / B1 / IMO PART 8



Easy to clean | Fácil de Limpar



Abrasion resistance | Resistência à abrasão
350.000 Martindale

BALTIC specifications:



Composition | Composição
100% Polyester



Flammability | Classe ignífuga
BS 5852 Part 1 - Cigarette / EN 1021-1 Cigarette
CA TB 117:2013 / NFPA 260 Cigarette
Optional Treatments (back coating)
BS 5852 Source 0&1 / Crib5 / 1.IM / M1 / B1 / IMO PART 8



Stain resistant | Anti-nódoa



Abrasion resistance | Resistência à abrasão
35.000+ Martindale

GRO1 MATERIAL SPECIFICATIONS

by elastrongroup.com

BOSTON specifications:



Composition | Composição
100% Polyester



Flammability | Classe ignífuga
BS 5852 Part 1 - Cigarette / EN 1021-1 Cigarette
CA TB 117:2013 / NFPA 260 Cigarette
Optional Treatments (back coating)
BS 5852 Source 0&1 / Crib5 / 1.IM / M1 / B1 / IMO PART 8



Abrasion resistance | Resistência à abrasão
80.000 Martindale

BRISTOL specifications:



Composition | Composição
100% Polyester



Flammability | Classe ignífuga
BS 5852 Part 1 - Cigarette / EN 1021-1 Cigarette
CA TB 117:2013 / NFPA 260 Cigarette
Optional Treatments (back coating)
BS 5852 Source 0&1 / Crib5 / 1.IM / M1 / B1 / IMO PART 8



Pet Friendly | Resistente a animais de estimação
Scratch Resistance



Abrasion resistance | Resistência à abrasão
100.000+ Martindale

BRONX specifications:



Composition | Composição
Surface: 85% Polyester + 15% Nylon
Backing: 100% Polyester



Flammability | Classe ignífuga
BS 5852 Part 1 - Cigarette / EN 1021-1 Cigarette
CA TB 117:2013 / NFPA 260 Cigarette
Optional Treatments (back coating)
BS 5852 Source 0&1 / Crib5 / 1.IM / M1 / B1 / IMO PART 8



Soft Hand Feeling | Toque Suave



Abrasion resistance | Resistência à abrasão
90.000+ Martindale

BROOKLYN specifications:



Composition | Composição
Surface: 94% Polyester + 6% Nylon
Backing: 100% Polyester



Flammability | Classe ignífuga
BS 5852 Part 1 - Cigarette / EN 1021-1 Cigarette
CA TB 117:2013 / NFPA 260 Cigarette
Optional Treatments (back coating)
BS 5852 Source 0&1 / Crib5 / 1.IM / M1 / B1 / IMO PART 8



Stain resistant | Anti-nódos



Abrasion resistance | Resistência à abrasão
50.000 Martindale

CASINO specifications:



Composition | Composição
100% Polyester



Flammability | Classe ignífuga
BS 5852 Part 1 - Cigarette / EN 1021-1 Cigarette
CA TB 117:2013 / NFPA 260 Cigarette
Optional Treatments (back coating)
BS 5852 Source 0&1 / Crib5 / 1.IM / M1 / B1 / IMO PART 8



Stain resistant | Anti-nódos



Pet Friendly | Resistente a animais de estimação
Scratch Resistance



Abrasion resistance | Resistência à abrasão
100.000 Martindale

20

GRO1 MATERIAL SPECIFICATIONS

by elastrongroup.com

DALLAS specifications:



Composition | Composição
Surface: 100% Polyester
Backing: 70% Regenerated Leather + 30% Polyester



Flammability | Classe ignífuga
BS 5852 Part 1 - Cigarette / EN 1021-1 Cigarette
CA TB 117:2013 / NFPA 260 Cigarette
Optional Treatments (back coating)
BS 5852 Source 0&1 / Crib5 / 1.IM / M1 / B1 / IMO PART 8



Abrasion resistance | Resistência à abrasão
40.000+ Martindale

DANUBIO specifications:



Composition | Composição
90% Polyester + 10% Rayon



Flammability | Classe ignífuga
BS 5852 Part 1 - Cigarette / EN 1021-1 Cigarette
CA TB 117:2013 / NFPA 260 Cigarette
Optional Treatments (back coating)
BS 5852 Source 0&1 / Crib5 / 1.IM / M1 / B1 / IMO PART 8



Abrasion resistance | Resistência à abrasão
30.000 Martindale

DUBAI specifications:



Composition | Composição
100% Polyester



Flammability | Classe ignífuga
BS 5852 Part 1 - Cigarette Test - PASS
EN 1021-1 - Cigarette Test - PASS
CA Tech. Bull. 117:2013 / NFPA 260 - Cigarette Test - PASS



Abrasion resistance | Resistência à abrasão
65.000+ Martindale

DUBLIN specifications:



Composition | Composição
100% Polyester



Flammability | Classe ignífuga
BS 5852 Part 1 - Cigarette / EN 1021-1 Cigarette
CA TB 117:2013 / NFPA 260 Cigarette
Optional Treatments (back coating)
BS 5852 Source 0&1 / Crib5 / 1.IM / M1 / B1 / IMO PART 8



Pet Friendly | Resistente a animais de estimação
Scratch Resistance



Abrasion resistance | Resistência à abrasão
100.000+ Martindale

FALCON specifications:



Composition | Composição 87% PVC + 11% Cotton + 2% PU (PC)



Flammability | Classe ignífuga
BS 5852 Part 1 - Cigarette & Match / EN 1021-1 / 2 Cigarette & Match
CA TB 117:2013 / NFPA 260 Cigarette



Anti-bacterial



Resistance to Hydrolysis (10 years)
Resistência à Hidrólise (10 anos)



Chemical Solvents-Free | Isento de Solventes Químicos



Abrasion resistance | Resistência à abrasão
500.000+ Martindale

GRO1 MATERIAL SPECIFICATIONS

by elastrongroup.com

GLASGOW specifications:



Composition | Composição
100% Polyester



Flammability | Classe ignífuga
BS 5852 Part 1 - Cigarette / EN 1021-1 Cigarette
CA TB 117:2013 / NFPA 260 Cigarette
Optional Treatments (back coating)
BS 5852 Source 0&1 / Crib5 / 1.IM / M1 / B1 / IMO PART 8



Pet Friendly | Resistente a animais de estimação
Scratch Resistance



Abrasion resistance | Resistência à abrasão
100.000+ Martindale

MACAU specifications:



Composition | Composição
100% Polyester



Flammability | Classe ignífuga
BS 5852 Part 1 - Cigarette / EN 1021-1 Cigarette
CA TB 117:2013 / NFPA 260 Cigarette
Optional Treatments (back coating)
BS 5852 Source 0&1 / Crib5 / 1.IM / M1 / B1 / IMO PART 8



Stain resistant | Anti-nódoa



Abrasion resistance | Resistência à abrasão
90.000+ Martindale

MADEIRA specifications:



Composition | Composição
100% Polyester



Flammability | Classe ignífuga
BS 5852 Part 1 - Cigarette / EN 1021-1 Cigarette
CA TB 117:2013 / NFPA 260 Cigarette
Optional Treatments (back coating)
BS 5852 Source 0&1 / Crib5 / 1.IM / M1 / B1 / IMO PART 8



Abrasion resistance | Resistência à abrasão
50.000+ Martindale

MUNICH SUEDE specifications:



Composition | Composição
Surface: 100% Polyester
Backing: 45% Polyester + 35% PU + 20% Cotton



Flammability | Classe ignífuga
BS 5852 Part 1 - Cigarette & Match / EN 1021-1 Cigarette
CA TB 117:2013 / NFPA 260 Cigarette
8



Resistance to Hydrolysis (10 years)
Resistência à Hidrólise (10 anos)



Abrasion resistance | Resistência à abrasão
35.000 Martindale

NAPPATECH specifications:



Composition | Composição
Surface: 100% PVC
Backing: 100% Polyester



Flammability | Classe ignífuga
BS 5852 Part 1 - Cigarette & Match / EN 1021-1 / 2 Cigarette & Match
CA TB 117:2013 / NFPA 260 Cigarette
Optional Treatments (back coating)
Crib5 / 1.IM / M1 / B1



IMO RES MSC.307(88) Part 8



Anti-bacterial
Anti-Mildew | Anti-Mofo



Resistance to Hydrolysis (10 years)
Resistência à Hidrólise (10 anos)



UV and FAD Resistance (QUV 1000h)
Resistência UV e Desgaste



Resistance to Cold Cracking (-23°C)
Resistência à Rotura por Congelamento



Waterproof | impermeável



Pet Friendly | Resistente a animais de estimação
Scratch Resistance



Chemical Solvents-Free | Isento de Solventes Químicos



Abrasion resistance | Resistência à abrasão
800.000+ Martindale

GRO1 MATERIAL SPECIFICATIONS

by elastrongroup.com

NOBEL specifications:



Composition | Composição
60% Cotton+ 14% Viscose+ 9% Acrylic
+ 7% Polyester+ 6% Linen+ 4% Other
Fabrics



Flammability | Classe ignífuga
BS SBS2 Part I - Cigarette Test - PASS
EN 1021-1 - Cigarette Test - PASS
NFPA 260 - Cigarette Test - PASS
FR - Cigarette & Match - Available with
Back Coating
BS 5852 Source O & 1 / Crib 5 / 1.IM



**Abrasion resistance | Resistência à
abrasão**
20.000 Martindale

OMEGA specifications:



Composition | Composição
Surface: 100% Polyurethane
Backing: 100% Polyester



Flammability | Classe ignífuga
BS 5852 Part I - Cigarette & Match / EN
1021-1 / 2 Cigarette & Match
CA TB 117:2013 / NFPA 260 Cigarette
Optional Treatments (back coating)
BS 5852 Source 0&1 / Crib5 / 1.IM / M1 /
B1 / IMO PART 8



Resistance to Hydrolysis (8 years)
Resistência à Hidrólise (8 anos)



IMO RES MSC.307(88) Part 8



**High Scratch Resistance |
Elevada Resistência a
Riscos**



**Chemical Solvents-Free |
Isento de Solventes Químicos**



**Abrasion resistance | Resistência à
abrasão**
500.000+ Martindale

OXFORD specifications:



Composition | Composição
100% Polyester



Flammability | Classe ignífuga
BS 5852 Part I - Cigarette / EN 1021-1
Cigarette
CA TB 117:2013 / NFPA 260 Cigarette
Optional Treatments (back coating)
BS 5852 Source 0&1 / Crib5 / 1.IM / M1 /
B1 / IMO PART 8



**Pet Friendly | Resistente a animais de
estimação**
Scratch Resistance



**Abrasion resistance | Resistência à
abrasão**
100.000+ Martindale

PACIFICO specifications:



Composition | Composição
100% Polyester



Flammability | Classe ignífuga
BS 5852 Part I - Cigarette / EN 1021-1
Cigarette
CA TB 117:2013 / NFPA 260 Cigarette



Resistance to Hydrolysis
Resistência à Hidrólise



**Abrasion resistance | Resistência à
abrasão**
80.000+ Martindale

PARIS specifications:



Composition | Composição
100% Polyester



Flammability | Classe ignífuga
BS 5852 Part I - Cigarette / EN 1021-1
Cigarette
CA TB 117:2013 / NFPA 260 Cigarette
Optional Treatments (back coating)
BS 5852 Source 0&1 / Crib5 / 1.IM / M1 /
B1 / IMO PART 8



**Pet Friendly | Resistente a animais de
estimação**
Scratch Resistance



**Abrasion resistance | Resistência à
abrasão**
100.000+ Martindale

GRO1 MATERIAL SPECIFICATIONS

by elastrongroup.com

PICASSO specifications:



Composition | Composição
59% Polyester + 41% Acetate



Flammability | Classe ignífuga
BS 5852 Part 1 - Cigarette / EN 1021-1 Cigarette
CA TB 117:2013 / NFPA 260 Cigarette
Optional Treatments (back coating)
BS 5852 Source 0&1 / Crib5 / 1.IM / M1 / B1 / IMO PART 8



Abrasion resistance | Resistência à abrasão
35.000+ Martindale

QUEENS specifications:



Composition | Composição
100% Polyester



Flammability | Classe ignífuga
BS 5852 Part 1 - Cigarette / EN 1021-1 Cigarette
CA TB 117:2013 / NFPA 260 Cigarette
Optional Treatments (back coating)
BS 5852 Source 0&1 / Crib5 / 1.IM / M1 / B1 / IMO PART 8



Stain resistant | Anti-nódoa



Abrasion resistance | Resistência à abrasão
500.000+ Martindale

ROMA specifications:



Composition | Composição
100% Polyester



Flammability | Classe ignífuga
BS 5852 Part 1 - Cigarette Test - PASS
EN 1021-1 - Cigarette Test - PASS
CA Tech. Bull. 117:2013 / NFPA 260 - Cigarette Test - PASS



Abrasion resistance | Resistência à abrasão
40.000 Martindale

ROYAL SUEDE specifications:



Composition | Composição
100% Polyester



Flammability | Classe ignífuga
BS 5852 Part 1 - Cigarette Test - PASS
EN 1021-1 - Cigarette Test - PASS
CA Tech. Bull. 117:2013 / NFPA 260 - Cigarette Test - PASS



Resistance to Hydrolysis
Resistência à Hidrólise



Abrasion resistance | Resistência à abrasão
30.000+ Martindale

SCOTLAND specifications:



Composition | Composição
100% Polyester



Flammability | Classe ignífuga
BS 5852 Part 1 - Cigarette Test - PASS
EN 1021-1 - Cigarette Test - PASS
CA Tech. Bull. 117:2013 / NFPA 260 - Cigarette Test - PASS
FR - Cigarette & Match - Available with Back Coating



Pet Friendly | Resistente a animais de estimação
Scratch Resistance



Abrasion resistance | Resistência à abrasão
100.000+ Martindale

GRO1 MATERIAL SPECIFICATIONS

by elastrongroup.com

SEATTLE specifications:



Composition | Composição
100% Polyester



Flammability | Classe ignífuga
BS 5852 Part 1 - Cigarette Test - PASS
EN 1021-1 - Cigarette Test - PASS
CA Tech. Bull. 117:2013 / NFPA 260 -
Cigarette Test - PASS
FR - Cigarette & Match - Available with
Back Coating



**Pet Friendly | Resistente a animais de
estimação**
Scratch Resistance



**Abrasion resistance | Resistência à
abrasão**
90.000 Martindale



Easy to clean | Fácil de Limpar

SWING specifications:



Composition | Composição
60,5% Acrylic + 39,5% Polyester



Flammability | Classe ignífuga
BS 5852 Part 1 - Cigarette Test - PASS
EN 1021-1 - Cigarette Test - PASS
CA Tech. Bull. 117:2013 / NFPA 260 -
Cigarette Test - PASS



**Abrasion resistance | Resistência à
abrasão**
50.000 Martindale

TRIBU specifications:



Composition | Composição
100% Polyester



Flammability | Classe ignífuga
BS 5852 Part 1 - Cigarette / EN 1021-1
Cigarette
CA TB 117:2013 / NFPA 260 Cigarette
Optional Treatments (back coating)
BS 5852 Source 0&1 / Crib5 / 1.IM / M1 /
B1 / IMO PART 8



Stain resistant | Anti-nódoa



**Abrasion resistance | Resistência à
abrasão**
35.000+ Martindale

VIENNA specifications:



Composition | Composição
100% Polyester



Flammability | Classe ignífuga
BS 5852 Part 1 - Cigarette / EN 1021-1
Cigarette
CA TB 117:2013 / NFPA 260 Cigarette
Optional Treatments (back coating)
BS 5852 Source 0&1 / Crib5 / 1.IM / M1 /
B1 / IMO PART 8



Stain resistant | Anti-nódoa



**Abrasion resistance | Resistência à
abrasão**
65.000+ Martindale

25

GRO2 MATERIAL SPECIFICATIONS

_Fabric by panaz.com

ALBA specifications:



Composition | Composição
100% Polyester with microporous Film and FR Backcoating



Stain resistant | Anti-nódoa
Anti-microbial



Waterproof | Impermeável



Flammability | Classe ignífuga
BS 5852 IGN Source 5, BS 7176 Medium Hazard, BS EN 1021 1/2, CAL TB 117, IMO FTP CODE 2010 Part 8, NFPA 260, Italian Classe Uno UNI 9175 (IIM) UPHOLSTERY



PFAS Free



Abrasion resistance | Resistência à abrasão
130.000 Martindale

EVE specifications:



Composition | Composição
100% Polyester with Microporous Film and FR Backcoating



Stain resistant | Anti-nódoa
Anti-microbial



Waterproof | Impermeável



Flammability | Classe ignífuga
BS 5852 IGN Source 5, BS 7176 Medium Hazard, BS EN 1021 1/2, CAL TB 117, IMO FTP CODE 2010 Part 8, NFPA 260



AB2998 Compliant, Prop 65 Compliant



Abrasion resistance | Resistência à abrasão
40.000 Martindale

HIGHLAND specifications:



Composition | Composição
100% Polyester with Microporous Film and FR Backcoating



Stain resistant | Anti-nódoa



Waterproof | Impermeável



Flammability | Classe ignífuga
B1, BS 5852 IGN Source 5, BS 7176 Medium Hazard, BS EN 1021 1/2, CAL TB 117, IMO FTP CODE 2010 Part 8, NFPA 260, IMO FTP Code 2010 Part 5, Italian Classe Uno UNI 9175 (IIM) UPHOLSTERY



Anti-microbial



Abrasion resistance | Resistência à abrasão
70.000 Martindale

KILDA specifications:



Composition | Composição
100% Polyester with Microporous Film and FR Laminate



Stain resistant | Anti-nódoa
Anti-microbial



Waterproof | Impermeável



Flammability | Classe ignífuga
B1, BS 5852 IGN Source 5, BS 7176 Medium Hazard, BS EN 1021 1/2, CAL TB 117, IMO FTP CODE 2010 Part 8, NFPA 260



Heavy Metals Free, Latex Free, Phthalate Free



Abrasion resistance | Resistência à abrasão
100.000+ Martindale

LUXE specifications:



Composition | Composição
100% Polyester with Microporous Film and FR Laminate



Stain resistant | Anti-nódoa



Waterproof | impermeável



Flammability | Classe ignífuga
BS 5852 IGN Source 5, BS 7176 Medium Hazard, BS EN 1021 1/2, CAL TB 117, IMO FTP CODE 2010 Part 8, NFPA 260



Anti-microbial



Abrasion resistance | Resistência à abrasão
70.000 Martindale

GRO2

_Fabric by panaz.com

MARNA specifications:



Composition | Composição
100% Polyester with Microporous Film
and FR Laminate



Flammability | Classe ignifuga
B1, BS 5852 IGN Source 5, BS 7176
Medium Hazard, BS EN
1021 1/2, CAL TB 117, IMO FTP CODE 2010
Part 8, NFPA 260



Stain resistant | Anti-nódoo



Anti-microbial



Waterproof | impermeável



Abrasion resistance | Resistência à
abrasão
75.000 Martindale

RIVA specifications:



Composition | Composição
100% Polyester with Microporous Film
and FR Laminate



Flammability | Classe ignifuga
BS 5852 IGN Source 5, BS 7176 Medium
Hazard, BS EN 1021
1/2, CAL TB 117, IMO FTP CODE 2010 Part
8, NFPA 260, Italian
Classe Uno UNI 9175 (11M) UPHOLSTERY



Stain resistant | Anti-nódoo



Anti-microbial



Waterproof | impermeável



Abrasion resistance | Resistência à
abrasão
60.000 Martindale

GRO2 MATERIAL SPECIFICATIONS

_Vinyl by panaz.com

ANTIQUE specifications:



Composition | Composição
PVC/Acrylic PU, Basecloth: Cotton/
Polyester



Stain resistant | Anti-nódoa
Anti-microbial



Waterproof | Impermeável



Flammability | Classe ignífuga
BS 5852 IGN Source 5, BS 7176 Medium
Hazard, BS EN 1021
1/2, CAL TB 117, IMO FTP CODE 2010 Part
8, NFPA 260, Italian
Classe Uno UNI 9175 (IIM) UPHOLSTERY



Latex Free, No Heavy Metals,
Phthalate Free



Abrasion resistance | Resistência à
abrasão
100.000+ Martindale

ASTON specifications:



Composition | Composição
Coating: PVC/PU/Acryltron, Basecloth:
Cotton/Polyester



Stain resistant | Anti-nódoa
Anti-microbial



Waterproof | Impermeável



Flammability | Classe ignífuga
BS 5852 IGN Source 5, BS 7176 Medium
Hazard, BS EN 1021
1/2, CAL TB 117, IMO FTP CODE 2010 Part
8, NFPA 260,
EN13501-1 Wallcovering, Italian Classe
Uno UNI 9175 (IIM)



Latex Free, No Heavy Metals,
Phthalate Free



Abrasion resistance | Resistência à
abrasão
1.000.000 Martindale

BROOKLAND specifications:



Composition | Composição
Coating: PVC/PU/Acryltron, Basecloth:
Cotton/Polyester



Stain resistant | Anti-nódoa



Waterproof | Impermeável



Flammability | Classe ignífuga
BS 5852 IGN Source 5, BS 7176 Medium
Hazard, BS EN 1021
1/2, CAL TB 117, IMO FTP CODE 2010 Part
8, M2, NFPA 260,
EN13501-1 Wallcovering, Italian Classe
Uno UNI 9175 (IIM)
UPHOLSTERY



Anti-microbial



Abrasion resistance | Resistência à
abrasão
1.000.000 Martindale

SOFT TOUCH PRO specifications:



Composition | Composição
Coating: PVC/PU/Acryltron, Basecloth:
Viscose/Polyester



Stain resistant | Anti-nódoa
Anti-microbial



Waterproof | Impermeável



Flammability | Classe ignífuga
BS 5852 IGN Source 5, BS 7176 Medium
Hazard, BS EN 1021
1/2, CAL TB 117, IMO FTP CODE 2010 Part
8, NFPA 260



Latex Free, No Heavy Metals,
Phthalate Free, REACH
Compliant



Abrasion resistance | Resistência à
abrasão
350.000 Martindale

VINTAGE specifications:



Composition | Composição
100% Polyester with Microporous Film
and FR Laminate



Stain resistant | Anti-nódoa



Waterproof | impermeável



Flammability | Classe ignífuga
BS 5852 IGN Source 5, BS 7176 Medium
Hazard, BS EN 1021
1/2, CAL TB 117, IMO FTP CODE 2010 Part
8, NFPA 260



Anti-microbial



Abrasion resistance | Resistência à
abrasão
70.000 Martindale

GRO2 MATERIAL SPECIFICATIONS

_Vinyl by panaz.com

ZEST specifications:



Composition | Composição

Coating: PVC/PU/Acryltron. Basecloth: Cotton/Polyester



Flammability | Classe ignifuga

BS 5852 IGN Source 5, BS 7176 Medium Hazard, BS EN 1021 1/2, CAL TB 117, IMO FTP CODE 2010 Part 8, M2, NFPA 260



**Stain resistant | Anti-nódoa
Anti-microbial**



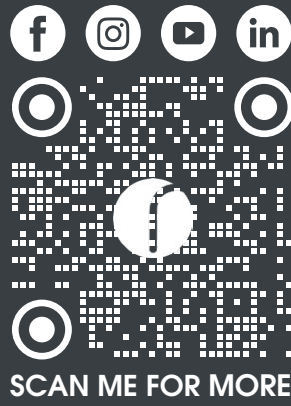
**Latex Free, No Heavy Metals,
Phthalate Free**



Waterproof | Impermeável



**Abrasion resistance | Resistência à
abrasão
200.000 Martindale**



TP.01_2026_MSDTL_SWATCHBOOK

R. Zona Industrial Nascente/Poente nº102
Apartado 34, 3750-353 Barrô - Águeda - Portugal

Tlf: +351 234 610 130 | Fax: +351 234 301 957

info@msilva.com.pt